



**MANDATORY DISCLOSURES**

**1. Name of the Institution**

SRM MADURAI COLLEGE FOR ENGINEERING AND TECHNOLOGY

Pottapalayam Village Manamadurai Taluk, Sivaganga District 630611, Tamil Nadu Mobile:  
7845775188, e-mail: [principal@srmmcet.edu.in](mailto:principal@srmmcet.edu.in)

**2. Name and address of the Trust and the Trustees**

SRT EDUCATIONAL & CHARITABLE TRUST

No.4, (OLD NO.31), Anantha Street, Alwarpet, Chennai, Tamil Nadu, 600018 Mobile:  
9281090003, e-mail: [principal@srmmcet.edu.in](mailto:principal@srmmcet.edu.in)

**3. Name and Address of the Principal Address including Telephone, Mobile, E-Mail**

Dr. S, Durairaj

Principal

SRM MADURAI COLLEGE FOR ENGINEERING AND TECHNOLOGY

Pottapalayam Village Manamadurai Taluk, Sivaganga District 630611, Tamil Nadu Mobile:  
7845800144 , e-mail: [principal@srmmcet.edu.in](mailto:principal@srmmcet.edu.in)

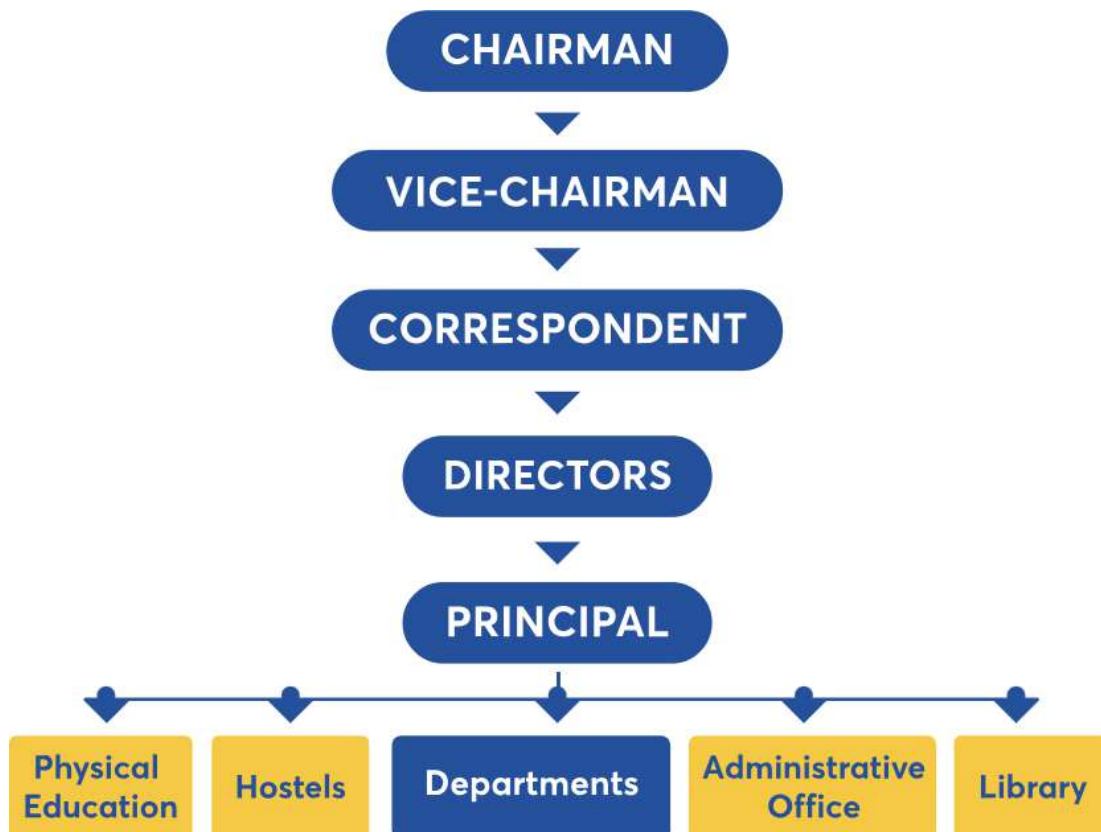
**4. Name of the affiliating University**

ANNA UNIVERSITY, Chennai, Tamil Nadu



## 5. Governance

### i. Organizational chart



### ii. Grievance Redressal mechanism for Faculty, staff and students

Comprising faculty members, administrative staff, and student representatives, the Anti-Ragging Committee is a multidisciplinary body that works collaboratively to prevent and address instances of ragging within the campus premises. The committee operates in accordance with the guidelines and directives set forth by regulatory bodies and the institution itself, aiming to create a culture of respect and dignity.

One of the primary functions of the committee is to raise awareness about the consequences of ragging among students through educational programs and campaigns. By organizing workshops, seminars, and orientation sessions, the committee strives to instill a sense of responsibility and accountability among the student body, promoting a zero-tolerance policy towards ragging activities.

In addition to preventive measures, the Anti-Ragging Committee is actively involved in monitoring and responding to any reported incidents promptly. The committee conducts regular inspections and patrols to identify potential hotspots for ragging, ensuring a swift and effective response to maintain a safe environment for all students.



The establishment of this committee underscores the institution's dedication to creating a nurturing space for intellectual and personal growth. It sends a strong message that any form of ragging will not be tolerated, and those found guilty will face severe consequences. By prioritizing the well-being of its students, SRM Madurai College for Engineering and Technology demonstrates its commitment to promotion a positive and inclusive educational experience for all.

**iii. Establishment of Anti Ragging Committee**

Link: <https://srmmcet.edu.in/anti-ragging-policy/>

**COMMITTEE**

### Anti-Ragging Committee

#### Anti-Ragging Committee Members

CHAIRMAN	CONVENER		
<b>Dr.S.Duraiaraj</b> Principal	<b>Dr.R.Sathishkumar</b> Assistant Professor / Physical Director		
MEMBERS			
<b>Dr.S.Raj Kumar</b> Associate Professor/Chemistry	<b>Dr.T.Premkumar</b> Assistant Professor/Mechanical	<b>Dr.S.Anirha</b> Assistant Professor/Mathematics	<b>Dr.P.Gandhimathi</b> Assistant Professor/Physics

**iv. Establishment of Online Grievance Redressal Mechanism**

Link: <https://srmmcet.edu.in/online-grievances/>

[srmmcet.edu.in/online-grievances/](https://srmmcet.edu.in/online-grievances/)



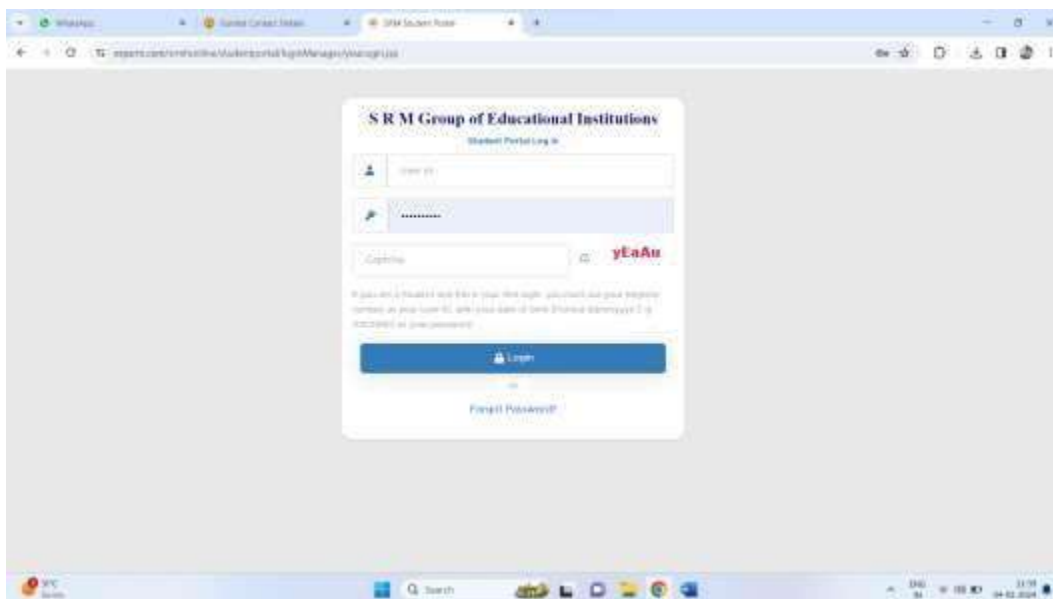
**Your concerns matter to us**

- Welcome to SRM MCET Grievance Portal, The online destination where your concerns meet solutions within our Institution.
- We value your feedback and are dedicated to ensuring your academic experience is seamless, enriching, and satisfying.
- Our Grievance Portal is your digital bridge to us, offering a straightforward and effective way to voice your concerns and insights.
- After login with valid credential, User will be redirected to their Dashboard.

 <b>For Staff</b> <a href="#">Login</a>	 <b>For Students</b> <a href="#">Login</a>	 <b>For Parents</b> <a href="#">Login</a>
---	--	---



## PORTAL For Students



- v. **Details of Grievance Redressal Committee in the Institution and OMBUDSMAN by the University**

Link: <https://srmmcet.edu.in/online-grievances/>

### Grievance Redressal Committee

## Redressal Committee Members

CHAIRMAN

Dr.S.Duraiaraj  
Principal

CONVENER

Dr.S.Raj kumar  
Associate Professor /Chemistry

MEMBERS

Dr.R.Premasumathi  
Assistant Professor/ Maths

Dr.D.Malathy  
Assistant Professor/Chemistry

Dr.R.Naganathan  
Assistant Professor / English

Dr.M.Senthamizhselvi  
Assistant Professor (SG) / Physics

- vi. **Establishment of Internal Committee (IC)**

Institution established Internal Committee (IC) in the campus and the details of the committee members are as follows:

S. No.	Name	Position	Present Designation
1.	Dr. S.Duraiaraj	Chairman	Principal
2.	Dr. C. Vimalarani	Member	Associate Professor
3.	Dr. P. Deepamangai	Member	Assistant Professor
4.	Mrs. D.Ajitha	Member	Assistant Professor
5.	Dr. T. Prem Kumar	Member	Assistant Professor



6.	Mrs.S.Prema	Member	Lab Assistant
7.	Mr.Anbarasan	Member	Lab Assistant
8.	Ms.Mohanavarthini	Member	Student
9.	Mr.S.S.Chandra Kishore	Member	Student
10.	Ms.Jagadha	Member	Student

**vii. Establishment of Committee for SC/ST**

Institution established Internal Committee (IC) in the campus and the details of the committee members are as follows:

S. No.	Name	Position	Present Designation
1	Dr. Durairaj. S	Chairman	Principal
2	Dr. Tharcis P	Member	Associate Professor
3	Dr. Vimalarani C	Member	Associate Professor
4	Mrs. Nithyakalyani M	Member	Assistant Professor

**viii. Internal Quality Assurance Cell**

The establishment of the Internal Quality Assurance Cell (IQAC) at SRM Madurai College for Engineering and Technology underscores the institution's commitment to academic excellence and continuous improvement. Comprising faculty members, administrators, and external stakeholders, the IQAC plays a pivotal role in enhancing the quality of education. It focuses on developing and implementing effective academic and administrative processes, conducting regular assessments, and fostering a culture of continuous improvement. By systematically monitoring and evaluating various aspects of the institution, the IQAC ensures that SRM Madurai College maintains high standards of quality in teaching, research, and overall educational delivery.

**IQAC's Vision, Mission with Objectives and functions**

**Vision**

Regulate, and consult on the initiatives made by the institution for raising its standards in education and the organizational framework by conducting frequent assessments to achieve the new benchmarks.

**Mission**

M1: To develop quality systems with conscious, reliable and transparent act for attaining best results for the academic and administrative performance of the institution

M2: To set benchmarks for periodic evaluation for improvements, significant growth and achievements.

**Objective and Functions**

O1: To establish student Learning-centric environment, using ICT tools for teaching and learning process and to inculcate value-based education system.



O2: To encourage Departments to organize seminars, workshops, orientation and faculty development program

O3: To promote research culture among staff and students.

O3: To encourage all the departments to outreach and build relationships with the institutes and industries of repute at global level.

O4: To assess the annual progress of departments and the Institution through timely reporting.

O5: Ensuring timely, efficient and progressive performance of academic, and administrative tasks.

O7: To Dissemination of information on various quality parameters of higher education

O8: to arrange feedback response from students, parents and other stakeholders on quality- related institutional processes

O6: To reparation of the Annual Quality Assurance Report (AQAR) as per guidelines and parameters of NAAC, to be submitted to NAAC

### **IQAC Composition**

The IQAC has been integrated as one of the parts of Institution aimed to establish definite processes to ensure quality in various important activities of the institution. The IQAC composition has been made in considering the facts of Accreditation counsels and committee.

S.No	Name of the Faculty	Designation
1	Dr. Durairaj. S	Principal - Chairperson
2	Dr. Ashok Kumar R	Member- Mechanical Engineering
3	Dr. Jayaranjani J	Member- Information Technology
4	Dr. Sangeetha	Member- Computer Science & Engineering
5	Mr. Sridhar	Administrative Officer
6	Er. Rajamohan,	Environ care, Madurai
7	Dr. Kannan. P.S	Emeritus Professor, Madurai
8	Dr.P.Deepamangai	Coordinator – Member Secretary

## **6. Programmes**

### **i. Name of Programmes approved by AICTE**

AICTE Institution Permanent ID: 1-5729671

Engineering and Technology & MBA

Sl.No	Program	Level	Name	Duration	Approved intake
1	E&T	UG	Computer Science and Engineering	4	120
2	E&T	UG	Electrical and Electronics Engineering	4	30





**SRM MADURAI**  
**COLLEGE FOR ENGINEERING AND TECHNOLOGY**  
 Approved by AICTE, New Delhi | Affiliated to Anna University, Chennai



3	E&T	UG	Electronics & Communication Engineering	4	120
4	E&T	UG	Mechanical Engineering	4	30
5	E&T	UG	Civil Engineering	4	30
6	E&T	UG	Information Technology	4	120
7	E&T	UG	Computer Science and Engineering (Artificial Intelligence and Machine Learning)	4	60
8	E&T	UG	Computer Science and Engineering (Cyber Security)	4	60
9	E&T	UG	Artificial Intelligence and Data Science	4	120
10	E&T	PG	Engineering Design	2	12
11	E&T	PG	VLSI Design	2	12
12	MBA	PG	Master of Business Administration	2	60

**ii. Name of Programmes Accredited by NBA**

NIL

**iii. Status of Accreditation of the Courses**

Not Applicable

**iv. Total number of Courses**

12

**v. For each Programme the following details are to be given (Preferably in Tabular form):**

Sl.No	Program	Level	Name	Duration	Approved intake
1.	E&T	UG	Computer Science and Engineering	4	120
2.	E&T	UG	Electrical and Electronics Engineering	4	30
3.	E&T	UG	Electronics & Communication Engg	4	120
4.	E&T	UG	Mechanical Engineering	4	30
5.	E&T	UG	Civil Engineering	4	30
6.	E&T	UG	Information Technology	4	120
7.	E&T	UG	Computer Science And Engineering (Artificial Intelligence and Machine Learning)	4	60
8.	E&T	UG	Computer Science and Engineering (Cyber Security)	4	60
9.	E&T	UG	Artificial Intelligence and Data Science	4	120
10.	E&T	PG	Engineering Design	2	12
11.	E&T	PG	VLSI Design	2	12
12.	MBA	PG	Master of Business Administration	2	60

**vi. Fee (as approved by the state government)**

As per Anna University and Tamil Nadu Government Norms

**vii. Name and duration of Programme(s) having Twinning and Collaboration with Foreign**



University(s) and being run in the same Campus along with status of their AICTE approval. If there is Foreign Collaboration, give the following details, if any:

NOT APPLICABLE

**viii. Nature of Collaboration**

NOT APPLICABLE

**ix. Complete details of payment a student has to make to get the full benefit of Collaboration**

NOT APPLICABLE

**x. For each Programme Collaborated provide the following:**

NOT APPLICABLE

**xi. Programme Focus**

NOT APPLICABLE

**xii. Number of seats**

NOT APPLICABLE

**xiii. Admission Procedure**

NOT APPLICABLE

**xiv. Fee (as approved by the state government)**

NOT APPLICABLE

**xv. Whether the Collaboration Programme is approved by AICTE? If not whether the Domestic/ Foreign University has applied to AICTE for approval**

NOT APPLICABLE

**7. Faculty**

**i. Course/Branch wise list Faculty members:**

First Name	Last Name	Programme Name	Department
Alagarsamy	Karthik	Engineering and Technology	Civil Engineering
Vaithinathan	Ganga	Engineering and Technology	Civil Engineering
Prithiviraj	Chidambaram	Engineering and Technology	Civil Engineering
Velu	Gowri	Engineering and Technology	Civil Engineering
Palaniappan	Krishna Kumar	Engineering and Technology	Civil Engineering
Pushpanathan	Ram Shankar	Engineering and Technology	Civil Engineering
Shankara Subramanian	Nagalakshmi	Engineering and Technology	Civil Engineering
Muthuramalingam	Pandieswari	Engineering and Technology	Civil Engineering
Manoharan	Tamilchelvan	Engineering and Technology	Civil Engineering





**SRM MADURAI**  
**COLLEGE FOR ENGINEERING AND TECHNOLOGY**  
Approved by AICTE, New Delhi | Affiliated to Anna University, Chennai



First Name	Last Name	Programme Name	Department
Ma Atmanandi	Shelvam	Engineering and Technology	Civil Engineering
M Balaji	Murugesan	Engineering and Technology	Civil Engineering
Thangapazham	Prabakar	Engineering and Technology	Computer Science & Engineering
Vinothini	R	Engineering and Technology	Computer Science & Engineering
G	Aninthitha	Engineering and Technology	Computer Science & Engineering
Mani	Venkateshprasath	Engineering and Technology	Computer Science & Engineering
Banupriya	Ravichandran	Engineering and Technology	Computer Science & Engineering
Prabhakar	Divya	Engineering and Technology	Computer Science and Engineering
Murugan	Kanimozhi	Engineering and Technology	Computer Science and Engineering
Malaisamy	Pandi	Engineering and Technology	Computer Science and Engineering
Seshan	Rajeswari	Engineering and Technology	Computer Science and Engineering
Sottallu	Subhashini	Engineering and Technology	Computer Science and Engineering
V	Sethupathi	Engineering and Technology	Computer Science and Engineering
Harikrishnan	Bharani	Engineering and Technology	Computer Science and Engineering
Sunitha	S	Engineering and Technology	Computer Science and Engineering
Chelladurai	Callinschriyana	Engineering and Technology	Computer Science and Engineering
Ramu	Lakshmi	Engineering and Technology	Computer Science and Engineering
Lakshmanan	Selvam	Engineering and Technology	Computer Science and Engineering
Janakiraman	Harishkumar	Engineering and Technology	Computer Science and



**SRM MADURAI**  
**COLLEGE FOR ENGINEERING AND TECHNOLOGY**  
Approved by AICTE, New Delhi | Affiliated to Anna University, Chennai



First Name	Last Name	Programme Name	Department
			Engineering
Gunasekaran	Poornima	Engineering and Technology	Computer Science and Engineering
Angala Eswari M	Muthumari	Engineering and Technology	Computer Science and Engineering
Somasundari Karuppiah	Karuppiah	Engineering and Technology	Computer Science and Engineering
Nivedha	E	Engineering and Technology	Computer Science and Engineering
Lithika V	Venkateson	Engineering and Technology	Computer Science and Engineering
Karuppasamy Pandian	Subburaj	Engineering and Technology	Computer Science and Engineering
Rengasamy	Sivanantham	Engineering and Technology	Computer Science and Information Technology
Ramesh	Sridevi	Engineering and Technology	Electrical and Electronics Engineering
Chinnapalanichamy	Vimalarani	Engineering and Technology	Electrical and Electronics Engineering
Arumugham	Rathinavel	Engineering and Technology	Electrical and Electronics Engineering
Palanivel	Deepamangai	Engineering and Technology	Electrical and Electronics Engineering
Sundar Raj	Durai Raj	Engineering and Technology	Electrical and Electronics Engineering
Arumugam	Narendran	Engineering and Technology	Electrical and Electronics Engineering
Karthik	Muthukrishnan	Engineering and Technology	Electrical and Electronics Engineering
Karthik	Muthukrishnan	Engineering and Technology	Electrical and Electronics Engineering
Geetha Natarajan	Somasundaram	Engineering and Technology	Electrical and Electronics Engineering
Pandiselvi	Nallathambi	Engineering and Technology	Electrical and Electronics Engineering
Jagadees Chandran	Rajalakshmi	Engineering and	Electrical and



**SRM MADURAI**  
**COLLEGE FOR ENGINEERING AND TECHNOLOGY**  
Approved by AICTE, New Delhi | Affiliated to Anna University, Chennai



First Name	Last Name	Programme Name	Department
		Technology	Electronics Engineering
A Jeyalakshmi	K Arumugam	Engineering and Technology	Electrical Engineering
Sudandiram	Anupriyadharsini	Engineering and Technology	Electronics & Communication Engg
Pillappan	Kavitha	Engineering and Technology	Electronics & Communication Engg
Rajamani	Sangeetha	Engineering and Technology	Electronics & Communication Engg
Balakrishnan	Buveneswari	Engineering and Technology	Electronics & Communication Engg
Anburaj B	Balasubramanian	Engineering and Technology	Electronics & Communication Engg
Dharani K	Kottaimani	Engineering and Technology	Electronics & Communication Engg
Loganathan	Ramalingam	Engineering and Technology	Electronics and Communications Engineering
Selvaraj	Jeeva	Engineering and Technology	Electronics and Communications Engineering
Muneeswaran	Dhamodaran	Engineering and Technology	Electronics and Communications Engineering
Subbiah	Karthik	Engineering and Technology	Electronics and Communications Engineering
Duraipandi	Ajitha	Engineering and Technology	Electronics and Communications Engineering
Shanmugavelu	Senthilrani	Engineering and Technology	Electronics and Communications Engineering
Raju	Vadivelan	Engineering and Technology	Electronics and Communications Engineering
Venkatesh	Ramasamy Jeyaram	Engineering and Technology	Electronics and Communications Engineering
P	Tharcis	Engineering and Technology	Electronics and Communications Engineering
Sarumathi	Vijayakumar	Engineering and Technology	Electronics and Communications Engineering
Sharmila N K	Neelamegam Venkatachalam	Engineering and Technology	Electronics and Communications



**SRM MADURAI**  
**COLLEGE FOR ENGINEERING AND TECHNOLOGY**  
Approved by AICTE, New Delhi | Affiliated to Anna University, Chennai



First Name	Last Name	Programme Name	Department
			Engineering
Antony	Richard Pravin	Engineering and Technology	Electronics and Communications Engineering
Mookkan	Jayamurugan	Engineering and Technology	Electronics and Communications Engineering
Divya Sharon	Raja	Engineering and Technology	Electronics and Communications Engineering
Kumba	Sujatha	Engineering and Technology	First Year/Other
Mothi Mohamed	Ebrahim	Engineering and Technology	First Year/Other
Karuppiah	Poovendran	Engineering and Technology	First Year/Other
Nagarajan Jawahar	Vignesh	Engineering and Technology	First Year/Other
Thirugnanapandian	Dhivya	Engineering and Technology	First Year/Other
Subramaniyan	Muthu Mariappan	Engineering and Technology	First Year/Other
K	Indira	Engineering and Technology	First Year/Other
Ramamoorthy	Manjula	Engineering and Technology	First Year/Other
Ramasamy	Sathish Kumar	Engineering and Technology	First Year/Other
Jesmond Maserenhas	Bimalroy	Engineering and Technology	First Year/Other
D	Malathy	Engineering and Technology	First Year/Other
Hariharan	Bhoomeeswaran	Engineering and Technology	First Year/Other
Subramaniam	Rajkumar	Engineering and Technology	First Year/Other
Philomenal	J	Engineering and Technology	First Year/Other
Manikandan	Anandakumar	Engineering and Technology	First Year/Other
Palaniswamy	Gandhimathi	Engineering and Technology	First Year/Other
Vinoth	Rajarathinam	Engineering and Technology	First Year/Other
Alagappan	Subramaniyan	Engineering and Technology	First Year/Other
Prema Sumathi	Rajendran	Engineering and Technology	First Year/Other
Puja	Sivakumar	Engineering and Technology	First Year/Other
Muthu	Senthamizh Selvi	Engineering and Technology	First Year/Other
Shanmugarajan	Anitha	Engineering and Technology	First Year/Other



**SRM MADURAI**  
**COLLEGE FOR ENGINEERING AND TECHNOLOGY**  
Approved by AICTE, New Delhi | Affiliated to Anna University, Chennai



First Name	Last Name	Programme Name	Department
Keerthana	Kandasamy	Engineering and Technology	First Year/Other
Rajalingam	Naganathan	Engineering and Technology	First Year/Other
Pandimeena	Ganesan	Engineering and Technology	First Year/Other
Karen	Augustus	Engineering and Technology	First Year/Other
Vignesh M	Murugesan	Engineering and Technology	First Year/Other
Vadivel	Vellaisamy	Engineering and Technology	First Year/Other
Anusuya Arjunan	Arjunan	Engineering and Technology	First Year/Other
M Lilly Clarence Mary	Michael Jayaseelan	Engineering and Technology	First Year/Other
Sivaprakash S	Selvam	Engineering and Technology	First Year/Other
K Nagaraj	Karuppaiah	Engineering and Technology	First Year/Other
S M Poornima	Mothilal	Engineering and Technology	First Year/Other
Sherin	Angelis	Engineering and Technology	First Year/Other
A	Aswin Raj	Engineering and Technology	First Year/Other
Elango	Pushparaj	Engineering and Technology	Information Technology
Sandhu Mohamed Meeran	Mohamedsanjarkhan	Engineering and Technology	Information Technology
Jeyakumar	Jeyaranjani	Engineering and Technology	Information Technology
Rajendran	Poornima	Engineering and Technology	Information Technology
Chidambara Kuttalampillai	Hari Nainyar Pillai	Engineering and Technology	Information Technology
Rajendran	Deepalakshmi	Engineering and Technology	Information Technology
Arunachalavel	Deepika	Engineering and Technology	Information Technology
Muthu Mariappan	Sangeetha	Engineering and Technology	Information Technology
Sivalingam	Kiruthika	Engineering and Technology	Information Technology
Neenu	Francis	Engineering and Technology	Information Technology
Sundaramurthy	Jenny Kalaiarasi	Engineering and Technology	Information Technology
M Jothi	Mani	Engineering and Technology	Information Technology
Merlin P	Paulraj	Engineering and Technology	Information Technology
Pavithra M	Manoharan	Engineering and Technology	Information Technology



**SRM MADURAI**  
**COLLEGE FOR ENGINEERING AND TECHNOLOGY**  
Approved by AICTE, New Delhi | Affiliated to Anna University, Chennai



First Name	Last Name	Programme Name	Department
P Vidhya	Pandi	Engineering and Technology	Information Technology
R Jenipa	Gopal Ravindra Pandian	Engineering and Technology	Information Technology
Nandhakumar	Saravana Kumar	Engineering and Technology	Information Technology
S Rathimeena	Senthil	Engineering and Technology	Information Technology
P Vijay Vikrama Karthikeyaa	Palanichamy Marudhai	Engineering and Technology	Information Technology
Karnan	Balamurugan	Engineering and Technology	Management
Tharmaraj	Premkumar	Engineering and Technology	Management
Ayyallu	Balaji	Engineering and Technology	Management
Pandurengan	Sabarinath	Engineering and Technology	Management
Rajendran	Ashokkumar	Engineering and Technology	Management
Vankatachalaperumal	Jeyabalaji	Engineering and Technology	Management
Nagalingam	Vimal Kumar	Engineering and Technology	Management
Benjamin	Eanest Jebasingh	Engineering and Technology	Marketing Management
S Sabarish	Senthil Kumar	Engineering and Technology	Masters In Business Administration
Srinivasan	Sambath	Engineering and Technology	Masters In Computer Applications
Muthusamy	Ramesh	Computer Applications	Mechanical Engineering
Vinothkumar	K	Management	Mechanical Engineering
Pandian	Raja	Management	Mechanical Engineering
Ganeshkumar	Pradeeba	Management	Mechanical Engineering
Faizal	Bathurutheen	Management	Mechanical Engineering
Pandi	Nandini	Management	Mechanical Engineering
B Nandhini	Balasubramanian	Management	Mechanical Engineering
Rajesh Kumar M	Manoharan	Management	Mechanical Engineering
Julian	Renin	Management	Mechanical Engineering
Subha	Subbiah	Management	Mechanical Engineering





**ii. Permanent Faculty**

All are Permanent faculty

**iii. Adjunct Faculty**

NIL

**iv. Permanent Faculty: Student Ratio**

1:18

**8. Profile of Principal**

**i. Name:** Dr. S. Durai Raj

**ii. Date of Birth:** 11/6/1971

**iii. Education Qualifications:** Ph.D., PDF (BOYSCAST FELLOW)

**iv. Work Experience:** 33 Years

**v. Teaching/ Research/ Industry/ Others:** 33 Years

**vi. Area of Specialization:** Reactive Power Management

**vii. Research guidance (Number of Students):** 63

**viii. No. of papers published in National/International Journals/Conferences:** 59

**ix. Master (Completed/Ongoing):** Completed

**x. Ph.D. (Completed/Ongoing):** Completed

**xi. Research Publications (No. of papers published in National/International Journals/Conferences):** 59

**xii. No. of Books published with details (Name of the book, Publisher with ISBN, year of publication, etc.):** 2

**9. Fee**

**i. No. of Fee waivers granted with amount and name of students**

Nil

**ii. Number of scholarship offered by the Institution, duration and amount**

Nil

**10. Admission**

**i. Number of seats sanctioned with the year of approval**

Year	Program	Level	Name	Duration	Approved intake
2023-24	E&T	UG	Computer Science and Engineering	4	60
	E&T	UG	Electrical and Electronics Engineering	4	60
	E&T	UG	Electronics & Communication Engineering	4	120



**SRM MADURAI**  
**COLLEGE FOR ENGINEERING AND TECHNOLOGY**  
 Approved by AICTE, New Delhi | Affiliated to Anna University, Chennai



E&T	UG	Mechanical Engineering	4	60
E&T	UG	Civil Engineering	4	60
E&T	UG	Information Technology	4	60
E&T	UG	Diploma in Mechanical Engineering	3	60
E&T	UG	Diploma in Civil Engineering	3	60
E&T	PG	Engineering Design	2	18
E&T	PG	VLSI Design	2	18

Year	Program	Level	Name	Duration	Approved intake
2024-25	E&T	UG	Computer Science and Engineering	4	120
	E&T	UG	Electrical and Electronics Engineering	4	30
	E&T	UG	Electronics & Communication Engineering	4	120
	E&T	UG	Mechanical Engineering	4	30
	E&T	UG	Civil Engineering	4	30
	E&T	UG	Information Technology	4	120
	E&T	UG	Computer Science And Engineering (Artificial Intelligence and Machine Learning)	4	60
	E&T	UG	Computer Science and Engineering (Cyber Security)	4	60
	E&T	UG	Artificial Intelligence and Data Science	4	120
	E&T	PG	Engineering Design	2	12
	E&T	PG	VLSI Design	2	12
	MBA	PG	Master of Business Administration	2	60

Year	Program	Level	Name	Duration	Approved intake
2025-26	E&T	UG	Computer Science and Engineering	4	120
	E&T	UG	Electrical and Electronics Engineering	4	30
	E&T	UG	Electronics & Communication Engineering	4	120
	E&T	UG	Mechanical Engineering	4	30
	E&T	UG	Civil Engineering	4	30
	E&T	UG	Information Technology	4	120
	E&T	UG	Computer Science And Engineering (Artificial Intelligence and Machine Learning)	4	60
	E&T	UG	Computer Science and Engineering (Cyber Security)	4	60



E&T	UG	Artificial Intelligence and Data Science	4	120
E&T	PG	Engineering Design	2	12
E&T	PG	VLSI Design	2	12
MBA	PG	Master of Business Administration	2	60

**ii. Number of Students admitted under various categories each year in the last three years**

Year	General Male excluding Minority	General Female including Minority	OB C Male	OBC Female	SC Male	SC Female	ST Male	ST Female	Physically Handicapped Male	Physically Handicapped Female	Minority Male	Minority Female	Transgender	TFW Male	TFW Female	NR Male	NRI Female	PIO Male	PIO Female	Total	Lateral Entry
2022-23	0	0	0	0	0	0	0	0	0	0	0	0	0	0	0	0	0	0	0	0	0
2023-24	6	2	188	171	9	3	0	0	0	0	0	0	0	0	0	0	0	0	0	385	6
2024-2025	30	21	330	10	8	0	0	0	0	0	24	15	0	0	0	0	0	0	0	621	7

**iii. Number of applications received during last year for admission under Management Quota and number admitted**

- 482 applications were received.
- 266 were admitted

**11. Admission Procedure**

**i. Mention the admission test being followed, name and address of the Test Agency/State Admission Authorities and its URL (website)**

As per Anna University Norms.

**ii. Number of seats allotted to different Test Qualified candidate separately (AIEEE//JEE/ CET (State conducted test/ University tests/ CMAT)/ Association conducted test etc.)**

Not Applicable

**iii. Calendar for admission against Management quota seats:**

As per Anna University Norms.

**iv. Last date of request for applications**



Every year July month last date

**v. Last date of submission of applications**

Every year July month last date

**vi. Dates for announcing final results**

As per Anna University Norms.

**vii. Release of admission list (main list and waiting list shall be announced on the same day)**

As per Anna University Norms.

**viii. Date for acceptance by the candidate (time given shall in no case be less than 15 days)**

As per Anna University Norms.

**ix. Last date for closing of admission & Starting of the Academic session**

As per Anna University Norms.

**x. The waiting list shall be activated only on the expiry of date of main list**

As per Anna University Norms.

**xi. The policy of refund of the Fee, in case of withdrawal, shall be clearly notified**

As per Anna University Norms.

**12. Criteria and Weightages for Admission**

**i. Describe each criterion with its respective weightages i.e. Admission Test, marks in qualifying examination etc.**

As per Anna University Norms.

**ii. Mention the minimum Level of acceptance, if any**

As per Anna University Norms.

**iii. Mention the cut-off Levels of percentage and percentile score of the candidates in the admission test for the last three years**

As per Anna University Norms.

**iv. Display marks scored in Test etc. and in aggregate for all candidates who were admitted**



As per Anna University Norms.

### 13. List of Applicants

List of candidate whose applications have been received along with percentile/percentages core for each of the qualifying examination in separate categories for open seats. List of candidate who have applied along with percentage and percentile score for Management quota seats (merit wise)

Name of the Students	Preferred course	Cut off Marks
SACHIN A	CSE/AIDS/IT/ECE	153.5
PRAJAN KUMAR S	IT	111.5
DHEERAJ R S	CSE	121.5
SRI NANDHA BALA R	ECE	167.5
JAFRIN V	EEE/LATERAL	165
ISAC REEGAN G	CSE	137.5
AADITYA SRINIVASAN K S	CSE	103
RITHIGAA A	CSE	119
VASANTHA KUMAR R	IT	134.5
LIBBASKHAN N B	CSE	157
SHANMUGAPRIYA B	CSE	144
ANWAR IBRAHIM M	CSE	161.5
SHANMUGA KATHIRESH V	CSE	155
VIGNESHWARAN B	CSE	120.5
MADHAVANSUNDAR R	CSE	125.5
NAKSHTRAA S T	CSE	117
HARSHAVARTHAN S	CSE/AIML/CYBER / IT	146.5
GOKUL K	AIDS	123.5
VISHNUPRIYA S	AIDS	108.5
YOKESWARAN R	AIDS	139
NAVEEN KUMAR R	CSE	123.5
DHARUN R	CSE	113
SADHANA K	AIDS	89.5
SHRIKRISHNA SRIPATHY	CSE/IT/ECE	140
JANANI SHREE A S	CSE	152.5
DHANUSHYA S	CSE	156
MOHAMMED AKIF A	CSE	188
DHARANI DHARAN M	IT	152.5
ASHWANTH S	CSE	104.5
SHRIVINOJ KARTHIKEYAN	CSE	116.5



**SRM MADURAI**  
**COLLEGE FOR ENGINEERING AND TECHNOLOGY**  
Approved by AICTE, New Delhi | Affiliated to Anna University, Chennai



POOJA	AIML	162.5
SELVA SRI RAMANI M	CSE	129.5
HAYAGREEVAN K	IT	108.5
VANADHI S	CSE	130.5
JEEVA J	CSE / IT	109.5
DEVIBALA A S	CSE	157.5
MOHAMMED AMEEN S	ECE	113.5
SURENDRA PUROHIT A	IT	136
KISHORE S	ECE	127
ANAND G	CSE	110
HARINI ESWARI RAMESH BABU	AIDS / AIML	131
MOHAMMED SHALIA I	AIML	127
NIKASH R	ECE	118
FERDIN JOE A	CSE	132.5
JENUSHA FREDRIN J	CSE	115
HARSHINI R K	IT	112.5
NITHYA DHARSHNI S	ECE	133
JEEVA SHREE P	IT	132.5
RADHA KRISHNAN P	CSE	129
GEETHESH B S	CSE	130
VISVESH YASYANTH T V	AIML / IT	131.5
VISHAL M	ECE	142.5
AROCKIA RAJAMANICKAM A	CSE	119.5
ABIRAMI S	IT	150
SANJANA S	CSE / MECH	117.5
BALAJI S	CSE/AIML/CYBER / IT	147
AKSHAYA SREE P S	AIDS	134.5
SARAVANA KUMAR S	CSE	95.5
DEVAPRASANNA P	CSE	128
SUBBURAJ G K	AIML / IT	112
RAPHAEL RODRICKS S J	CSE	150.5
TARUN VENKAT M	AIDS	143
POOJA SRI T S	CSE	167.5
SIMEON P	CSE	100
HARI PRASATH M	CSE	110.5
KISHORE MONISH V S	IT	143
HARSHINI M S	CSE/ ECE	100
SIVARAM A	CSE	167.5
MADHAN KUMAR N R	CSE	149.5
DHARIKA S	CSE	99.5
SARAVANAN K	IT	153
PRIYADHARSHINI V	ECE	107.5
JEYAN JERRISH J	CSE	122





**SRM MADURAI**  
**COLLEGE FOR ENGINEERING AND TECHNOLOGY**  
Approved by AICTE, New Delhi | Affiliated to Anna University, Chennai



VEERESH AARYA V	IT	161
HIRTHISH R	CSE	167.5
SAKTHIVEL S	AIDS	112
AGASI IDHAYA A	CSE/IT/ECE`	162
DEEPAK VAIDHYA A	CSE	115.5
ILAVAZHAHA NATHAN S	CSE	117
ABIRAMI R	AIDS	140
VIJAY P G	AIDS	145.5
SANTHIYA K K	AIDS	69
ROHITH S	ECE	155
KISHORE KUMAR S	CSE / IT	167.5
DARSANI R	IT	152.5
SHIVANI P	CSE	119
JEEVIKA C	IT	131
KANISHKA S	CSE/ AIML / AIDS / IT	144
VIGNESH KUMAR S	CSE	170.5
ROGER GABRIEL J	CSE	136
SAADHANA D	AIDS	163
MIRTHIKA R	IT	168
SACHIN M	AIDS	129
HARSHINI K	CSE	165.5
GOUSHIKRAM G	CSE	138
SARAH CHRISTA T	CSE	123.5
UVAN M	EEE	183
YADESH KANNAN S	EEE	136
NABEEL IBRAHIM M I	AIDS	93
SIVAPRATHA N	IT	136.5
AAFRIN MUFINA S	AIDS	110
PRIYADHARSHAN M C	CSE	138
VARUN S	CSE	113.5
RUBIKA SAKTHI M	CSE	155
MUKILAN A T	CSE	153.5
THATSHANA B	AIML / IT	157
NIRANJAN KUMAR J	CSE	152
HARIVIGNESH R	AIDS	120
ANIRUDH G	CSE	106
KRISHYA M	CSE	190
AKSHAYA DHARSHINI J	CSE	119
SRIAKSHAYA H	IT	108.5
RUNIL MADHAVAN Y	CSE/ ECE	122.5
HARISH KUMAR V	CSE	107
MATHANGI S	CSE	132.5
MADHAN BALAJI T	CSE	109.5



**SRM MADURAI**  
**COLLEGE FOR ENGINEERING AND TECHNOLOGY**  
Approved by AICTE, New Delhi | Affiliated to Anna University, Chennai



PAVITHRA M	IT	139
ASWATHI S	ECE	121
BASHERA MARIYAM A	CSE	110.5
SHAWN SAMUEL H	IT	150.5
SIVAGANESH M	CSE	139
RAKCHA H	EEE	142
YAZHINI V	CSE/IT/ECE`	156
ARUTHRA S	CSE	129
KANYA S	CSE	141.5
SIVAPRABHAKARAN M	AIDS	117
HARIHARAN P	AIDS	123
VARSHIDA KANNIVADI BALAJI	AIDS	165
KARTHIGEYAN M B	ECE	112
SHIVANAND M	CSE / IT	161.5
NEIVE JOEL S J	IT	137.5
KUBENDRA GURU S R	CSE	147.5
SURESH N	IT	139
ROHITH R	CSE/ AIML / AIDS / IT	143.5
MAHIMA SAI T	CSE	123
NAVEEN N	CSE	124.5
SRINITHI S	ECE	143.5
ANANDHARAJ G	EEE	151.5
SASMITHA SHREE C	CSE	135
ANUSHWA B	CSE	155.5
SAMUEL HENRY B	IT	111.5
RENITHA R	CSE/ ECE	125
HARSHINI R M	CSE	154.5
SARVESH S	CSE	103.5
SAALIHA BEGAM M	CSE	129
SUVAM KUNTI S	IT	95
DEEPALAKSHMI V	ECE	148.5
SRUTHI M	CSE	122
VISHWA G	IT	165
VARSHA DEVI K H	CSE	159
DIVYA B	CSE	158.5
DEEPIKA R	AIML / IT	156.5
NAVEENKUMAR N	CSE	84.5
VARSHINI K S	AIDS	115
YOGA SAIRAM P	CSE	109
TAMALIKA K	CSE	111
SOWMIYA S	CSE	156.5
RAGUL M	IT	121.5
VIGNESH A	CSE/ ECE	142



**SRM MADURAI**  
**COLLEGE FOR ENGINEERING AND TECHNOLOGY**  
Approved by AICTE, New Delhi | Affiliated to Anna University, Chennai



MANJULA DEVI S	CSE	138.5
ARIHARAN M	CSE	122
CHARUKESH D	CSE	132.5
VANDHANA A	IT	104
SURYA PRAKASH K	ECE	123
YOGESHVARAN KOTTAIMANI	CSE	112.5
AMINA SHABNAM A R	CSE	115
SIVASACHIN C P	CSE	107
AKSHAYA V	IT	102.5
JAYANTH H	CSE/ ECE	121.5
RAVIN R	ECE	100.5
ARUN S J	ECE	152
MOHIT BALAJI S	EEE	113.5
MURUGANANTHAM V	ECE	102
SUJITH BALAJI S	AIDS	118
AKCHARA T J S	CSE	124.5
ABDUL RAHEEM S	IT	124
RAKESHPRABHU M	AIML	120.5
SANTHIYA M	CSE	116
GURUPRASATH T S	AIDS	141.5
SWETHA N S	CSE	134.5
VIKRAM KRISHNAA S S	IT	147
ANUGRAHA M G	AIDS	133.5
KEERTHANA B	IT	146
KARTHIK K	CSE	123
VASANTH B	IT	156
SWETHA NACHIAR M	CSE/AIML/CYBER / IT	134.5
MUTHU LAKSHMI M	CSE	113.5
SWETHA SRI R	CSE/IT/AIDS	151.5
MAKANDA S S	CSE	137.5
BALAJI L	ECE	121.5
E CRISPIN A KATTAR	CSE	137.5
SAHANA J	CSE/AIDS/IT/ECE	118
SUVIDHARAN M	CSE / ECE	129
SRI SWETHA N	CSE	151.5
SAISHRI K J	ECE	148
VIKASH NARAYANAN G R	CSE/CYBER/AIML	134
SITHIKAROBINA N	CSE	139.5
JEROME BENYAMIN C	ECE	113
SANJAI NAGAMUTHU V	CSE	135
SACHIN R	IT	165
SANGEETHA S	AIML	148
KARISHMA C	CSE/ECE	116



**SRM MADURAI**  
**COLLEGE FOR ENGINEERING AND TECHNOLOGY**  
Approved by AICTE, New Delhi | Affiliated to Anna University, Chennai



MATHESH M	CSE	123
SHYAM SHANMUGAM M	CSE / AIML	149.5
IMAYANATHAN T P	CSE	129.5
BHAVANI K	CSE	144
CELESTIN D A	CSE	141
KAVIKEERTHANA V	ECE	130.5
AJAY KUMAR D	AIDSD	135
SRIMATHI S	AIML	113
KRITHIEESH KUMAAR K S	CSE/ECE	121.5
SIVAKUMARAN K R S	CSE / CYBER	126.5
SANTHOSH R	CSE	118
MITHUN BHARATHI R M	AIDS	160
JOSELYN SWEETY A	IT	115.5
RAKSHAN M	IT	139
HARISH A	AIDS	139.5
SHAHINA B	AIDS	137.5
DEEPAK K	IT	101.5
MOHAMED IRFAN M	AIML	127.5
KABIL BALAN S	CSE	101.5
VETTRIVEL R	AIDS	143.5
KRITHIK PRABHU V S	CSE	165
PRIYA RAHUL S	IT	107.5
Mohammed Askar U	AIDS	91
CHELLAPRKASH	IT	
NITHEESWARAN.A	CSE	129
VASANTH S	IT	104.5
JOSHUA MISHAEL K	CSE/AIML/CYBER / IT	126.5
KATHIR VELAN B	CSE	103
BAYHAN M	CSE/IT/AIDS	123
SAMY NATHAN M	CSE	146
HARIHARAN S	ECE	111
VASANTHAKUMAR M	CSE	135.5
PRASANNA K	CSE/AIDS/IT/ECE	103.5
SNEKHA R	CSE / ECE	151
YOKESHWARAN M	CSE	121.5
MITHUNADEVI M	ECE	138.5
TRU TEJASAWINII	CSE/CYBER/AIML	106.5
DEEPAK P	CSE	124.5
KARISHMA DHARSHINI M	ECE	107.5
SRINIVAS S M	CSE	127.5
SIVAANI T	IT	109
SHRI VISAGAN M V	AIML	151
IRANIYAN K	CSE/ECE	156.5



ASWATH NARAYANAN A B	CSE	132.5
PRIYA DHARSHINI P	CSE / AIML	126.5
DANIEL GIFTSON R	CSE	118
SIDHAARTHAN T	CSE	121
IRFAAN RIFAYIL Z	CSE	130.5
MOHAMMED THOUFIQ I	ECE	164
MITHILA SRI K B	AIDS	156
SWETHA S	AIML	119.5
MOHAMMED MOINUDDIN S	CSE/ECE	144.5
MITHILESH R	CSE / CYBER	160.5
ADNAN MUSTAFA A	CSE	128.5
KRISHNA KUMAR S	AIDS	131
MIZWAR SHAHUL R	IT	116
RIFFA A	IT	122
POORNA JEYA ANAND N	AIDS	107.5
PRASITHA DHARSHINI D	EEE	118
DHAARANI S	ECE	155.5
MARY DISNEY A	EEE	147.5
SRI HAARISH S	Mech	112.5
DIVYA DHARSHINI K V	Civil	144
JENNIFER CEROLINE A	CSE	167

**14. Results of Admission Under Management seats/Vacant seats**

**i. Composition of selection team for admission under Management Quota**



**SRM MADURAI**  
**COLLEGE FOR ENGINEERING AND TECHNOLOGY**  
Approved by AICTE, New Delhi | Affiliated to Anna University, Chennai



**COMMITTEE TO REGULATE – MONITOR THE ADMISSIONS OF STUDENTS TO  
PROFESSIONAL COURSES BY SELF FINANCING PROFESSIONAL, ARTS AND  
SCIENCE COLLEGES**

From	To
Chairman Committee to Regulate – Monitor the Admissions P1, DOTE Staff Quarters, Gandhi Mandapam Road, Guindy, Chennai – 600 025.	The Principals of All Self Financing Engineering Colleges Offering B.E. /B.Tech / B.Arch & M.E. / M.Tech / M.Arch & MBA / MCA Courses

**Letter No. COA / Engg. Admn / 032 / 2024 / 05.11.2024.**

Sir / Madam,

Sub: Approval of Admission of Students under Management Quota – Reg.

Ref: Proceeding of the Committee, Proc. No. COA/Engg/032/2024,

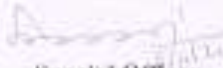
Dated: 12.06.2024

\*\*\*\*\*

With the reference to the Proceedings of the Committee, you are requested to send the representatives of your institution along with the copies of the allotment order and Rank Statement issued by the respective Consortium / Associations as per schedule notified against the College for approval of admissions of students under Management Quota and Government Quota Lapsed Seats.

/By Order/

Sd/-  
Chairman

  
Special Officer





# SRM MADURAI

## COLLEGE FOR ENGINEERING AND TECHNOLOGY

Approved by AICTE, New Delhi | Affiliated to Anna University, Chennai



SCHEDULE DATE 12.12.2024		
Sl.No	Name of the College	Reporting Time/Date
1	Sri Vidya College of Engineering and Technology Sivakasi Main Road P Kumeralingapuram Virudhunagar District 626005	10.30 A.M/12.12.2024
2	Mahakavi Bharathiyar College of Engineering and Technology Vasudevanallur Tenkasi District 627758	
3	Anna Vailankanni College of Engineering Pothigudi Salai Pottalkulam Ashvagappapuram Kanyakumari District 629401	
4	Sri Ranganathan College of Engineering & Technology Amaravathi Village Amaravathi Padur Post Karaikudi Sivagangai	
5	SRM Institute of Engineering and Technology Kuttathupatti Village Sindalagundu Post Dindigul District 624002	
6	Vaigai College of Engineering Therkuthuru Melur Taluk Madurai District 625122	
7	Karaikudi Institute of Technology and Karaikudi Institute of Management KIT & KIM Technical Campus Keeranipatti Thalakkavur Karaikudi Sivagangai District 630307	
8	Mangayarkarasi College of Engineering First Street Mangayarkarasi Nagar Paravai Madurai District 625402	2.30 P.M./12.12.2024
9	Jaimee College of Engineering and Technology, Dindigul-Theni Main Road, (PHB Extn.), Aathupattipet, Veenakkal, B.P.O.K Panjampatti Post, Dindigul 624303	
10	J.K. College of Architecture, NH-7, Madurai Road, Begampur Post, Dindigul 624002	
11	Agni School of Architecture and Design Excellence (ASADE), MH5, Trichy Road, Marepatti, Vedamadurai, Dindigul District 624001	
12	Christian College of Engineering and Technology Oddanchatram Dindigul District 624619	
13	Sri Subramanya College of Engineering and Technology, Subbaramanaickenpatti, Palani, Dindigul District 626615	
14	N P R College of Engineering and Technology Netham Dindigul District 624401	
15	SRM Madurai College for Engineering and Technology (Formerly Madurai Institute of Engineering and Technology), Pottapalayam Village Manamadurai Taluk Sivagangai District 630611	
16	Veerammal Engineering College PVP Nagar K.Singarakottai Dindigul-624708	
17	R V S Educational Trust's Groups of Institutions, Integrated Campus N Paraiyatti Post Vedasandur Taluk Dindigul District 624005	
18	R V S Educational Trust's Group of Institutions, RVS Nagar, Karur Road, N Paraiyatti Post, Vedasandur Taluk, Dindigul District 624005	
19	Radar Saranavathi College of Engineering and Technology Vadupudupatti Annaji Post Theni District 625831	
20	Bharath Nootan Engineering College Thimmarasanaickanoor Aundipatti Theni District 625836	



# SRM MADURAI

## COLLEGE FOR ENGINEERING AND TECHNOLOGY

Approved by AICTE, New Delhi | Affiliated to Anna University, Chennai



Consortium of Self - Financing Professional,  
Arts and Science Colleges in Tamilnadu, Chennai - 600 040.  
Professional Courses (B.E. / B.Tech. / B.Arch.) Admissions - 2024

**RANK STATEMENT**

Application Number : 453321  
Name of the Candidate : VASANTH.B

Random Number	Maximum Marks	Marks Obtained	Marks obtained in words	Overall Rank
3576147681	200	159.000	ONE FIVE NINE POINT ZERO ZERO ZERO	5740

Name : VASANTH.B  
App. No: 453321

Signature of the candidate

Secretary,  
Professional Courses  
(B.E. / B.Tech. / B.Arch.)  
Admissions - 2024

Possession of rank statement card does not guarantee fulfillment of eligibility requirements and admission.

CONSORTIUM OF SELF - FINANCING PROFESSIONAL,  
ARTS AND SCIENCE COLLEGES IN TAMILNADU, CHENNAI - 600 040.  
PROVISIONAL ALLOTMENT ORDER FOR B.E./B.TECH./B.ARCH.  
(MANAGEMENT QUOTA SEATS)

Date : 05-10-2024

The candidate is informed that he/she has been PROVISIONALLY allotted as per teacher option for admission to the College for First year B.E./B.TECH./B.ARCH. as details below

Application No. : 453321  
Name of the Candidate : VASANTH.B  
College allotted : SRM Madurai College of Engineering and Technology  
Nedunkulam Road  
Pottapalayam,  
Sivagangai - 630612

He/She should report to the principal / Dean of the above college with original documents mentioned on the reverse within a week. The candidate who fails to report for admission to the college on the stipulated date will lose his / her seat and cannot claim any seat afterwards.

Please read the instructions given overleaf carefully.

\* Admission is subject to verification of originals by the college authorities at the time of admission.

\* Allotment of branch seats with the college authorities at the time of admission.

Secretary,  
Professional Courses  
(B.E./B.Tech./B.Arch.) Admissions - 2024



**ii. List of candidate who have been offered admission**

Name of the Course & Branch : Artificial Intelligence and Data Science				
Sl. No.	Application No.	Name of the Students	Cut off Marks (As per Govt. Norms)	Date of admission
1	453277	SACHIN A	153.5	13-08-2024
2	453278	PRAJAN KUMAR S	111.5	27-08-2024
3	453297	DHEERAJ R S	121.5	20-08-2024
4	453293	SRI NANDHA BALA R	167.5	20-08-2024
5	453294	JAFRIN V	165	28-08-2024
6	453280	ISAC REEGAN G	137.5	13-07-2024
7	453276	AADITYA SRINIVASAN K S	103	15-08-2024
8	453287	RITHIGAA A	119	27-08-2024
9	453284	VASANTHA KUMAR R	134.5	01-09-2024
10	453299	LIBBASKHAN N B	157	06-09-2024
11	453304	SHANMUGAPRIYA B	144	19-08-2024
12	453282	ANWAR IBRAHIM M	161.5	13-09-2024
13	453275	SHANMUGA KATHIRESH V	155	15-08-2024
14	453279	VIGNESHWARAN B	120.5	22-08-2024
15	453281	MADHAVANSUNDAR R	125.5	22-08-2024
16	453285	NAKSHTRAA S T	117	18-08-2024
17	453288	HARSHAVARTHAN S	146.5	22-08-2024
18	453290	GOKUL K	123.5	08-08-2024
19	453298	VISHNUPRIYA S	108.5	15-09-2024
20	453295	YOKESWARAN R	139	28-08-2024
21	453274	NAVEEN KUMAR R	123.5	20-08-2024
22	453291	DHARUN R	113	24-08-2024
23	453292	SADHANA K	89.5	21-07-2024
24	453301	SHRIKRISHNA SRIPATHY	140	06-07-2024
25	453302	JANANI SHREE A S	152.5	20-08-2024
26	453300	DHANUSHYA S	156	15-08-2024
27	453388	MOHAMMED AKIF A	188	30-08-2024
28	453399	DHARANI DHARAN M	152.5	14-08-2024
29	453289	ASHWANTH S	104.5	13-05-2024
30	453359	SHRIVINOJ KARTHIKEYAN	116.5	22-03-2024
31	453370	POOJA	162.5	25-03-2024
32	453306	SELVA SRI RAMANI M	129.5	28-08-2024



**SRM MADURAI**  
**COLLEGE FOR ENGINEERING AND TECHNOLOGY**  
Approved by AICTE, New Delhi | Affiliated to Anna University, Chennai



33	453305	HAYAGREEVAN K	108.5	17-08-2024
34	453380	VANADHI S	130.5	19-08-2024
35	453307	JEEVA J	109.5	14-08-2024
36	453381	DEVIBALA A S	157.5	22-07-2024
37	453390	MOHAMMED AMEEN S	113.5	08-07-2024
38	453371	SURENDRA PUROHIT A	136	16-08-2024
39	453283	KISHORE S	127	27-08-2024
40	453221	ANAND G	110	14-05-2024

**Name of the Course & Branch : Computer Science and Engineering (Cyber Security)**

Sl. No.	Application No.	Name of the Students	Cut off Marks (As per Govt. Norms)	Date of admission
41	453210	HARINI ESWARI RAMESH BABU	131	06-08-2024
42	453362	MOHAMMED SHALIA I	127	03-09-2024
43	453224	NIKASH R	118	25-08-2024
44	453211	FERDIN JOE A	132.5	19-08-2024
45	453189	JENUSHA FREDRIN J	115	27-08-2024
46	453220	HARSHINI R K	112.5	05-08-2024
47	453365	NITHYA DHARSHNI S	133	02-09-2024
48	453386	JEEVA SHREE P	132.5	22-08-2024
49	453409	RADHA KRISHNAN P	129	27-09-2024
50	453233	GEETHESH B S	130	01-08-2024
51	433389	VISVESH YASYANTH T V	131.5	30-09-2024
52	453231	VISHAL M	142.5	05-08-2024
53	433400	AROCKIA RAJAMANICKAM A	119.5	09-09-2024
54	457369	ABIRAMI S	150	22-09-2024
55	453218	SANJANA S	117.5	03-08-2024
56	453199	BALAJI S	147	20-08-2024
57	453213	AKSHAYA SREE P S	134.5	04-08-2024
58	453219	SARAVANA KUMAR S	95.5	04-08-2024
59	453203	DEVAPRASANNA P	128	05-08-2024
60	453217	SUBBURAJ G K	112	05-08-2024
61	453223	RAPHAEL RODRICKS S J	150.5	07-08-2024
62	453204	TARUN VENKAT M	143	07-08-2024
63	453201	POOJA SRI T S	167.5	10-08-2024
64	453200	SIMEON P	100	02-08-2024
65	453232	HARI PRASATH M	110.5	04-08-2024
66	453205	KISHORE MONISH V S	143	30-08-2024
67	453944	HARSHINI M S	100	27-09-2024
68	453375	SIVARAM A	167.5	03-04-2024





**SRM MADURAI**  
**COLLEGE FOR ENGINEERING AND TECHNOLOGY**  
Approved by AICTE, New Delhi | Affiliated to Anna University, Chennai



Name of the Course & Branch : Computer Science and Engineering				
Sl. No.	Application No.	Name of the Students	Cut off Marks (As per Govt. Norms)	Date of admission
69	453158	MADHAN KUMAR N R	149.5	14-08-2024
70	453183	DHARIKA S	99.5	01-09-2024
71	453194	SARAVANAN K	153	07-09-2024
72	453193	PRIYADHARSHINI V	107.5	14-08-2024
73	453152	JEYAN JERRISH J	122	13-08-2024
74	453153	VEERESH AARYA V	161	15-08-2024
75	453163	HIRTHISH R	167.5	10-08-2024
76	453181	SAKTHIVEL S	112	13-09-2024
77	453154	AGASI IDHAYA A	162	26-08-2024
78	453157	DEEPAK VAIDHYA A	115.5	25-09-2024
79	453155	ILAVAZHAHA NATHAN S	117	14-08-2024
80	453179	ABIRAMI R	140	30-08-2024
81	453159	VIJAY P G	145.5	04-09-2024
82	453187	SANTHIYA K K	69	26-08-2024
83	453174	ROHITH S	155	09-09-2024
84	453173	KISHORE KUMAR S	167.5	09-09-2024
85	453166	DARSANI R	152.5	06-08-2024
86	453195	SHIVANI P	119	25-09-2024
87	453162	JEEVIKA C	131	03-09-2024
88	453175	KANISHKA S	144	24-08-2024
89	453165	VIGNESH KUMAR S	170.5	13-08-2024
90	453185	ROGER GABRIEL J	136	25-08-2024
91	453161	SAADHANA D	163	01-09-2024
92	453156	MIRTHIKA R	168	14-08-2024
93	453172	SACHIN M	129	14-08-2024
94	453160	HARSHINI K	165.5	08-08-2024
95	453178	GOUSHIKRAM G	138	04-09-2024
96	453177	SARAH CHRISTA T	123.5	26-08-2024
97	433397	UVAN M	183	05-09-2024
98	453151	YADESH KANNAN S	136	28-09-2024
99	453167	NABEEL IBRAHIM M I	93	06-08-2024
100	433936	SIVAPRATHA N	136.5	16-09-2024
101	453164	AAFRIN MUFINA S	110	20-08-2024
102	453186	PRIYADHARSHAN M C	138	17-08-2024
103	453176	VARUN S	113.5	07-08-2024
104	453171	RUBIKA SAKTHI M	155	08-08-2024
105	453184	MUKILAN A T	153.5	09-08-2024
106	453192	THATSHANA B	157	11-08-2024



**SRM MADURAI**  
**COLLEGE FOR ENGINEERING AND TECHNOLOGY**  
Approved by AICTE, New Delhi | Affiliated to Anna University, Chennai



107	453180	NIRANJAN KUMAR J	152	11-08-2024
108	453182	HARIVIGNESH R	120	01-09-2024
109	453188	ANIRUDH G	106	02-09-2024
110	453403	KRISHYA M	190	17-09-2024
111	459339	AKSHAYA DHARSHINI J	119	11-09-2024
112	459340	SRIAKSHAYA H	108.5	11-09-2024
113	453190	RUNIL MADHAVAN Y	122.5	30-08-2024
114	453392	HARISH KUMAR V	107	30-09-2024
115	453396	MATHANGI S	132.5	10-08-2024
116	453246	MADHAN BALAJI T	109.5	28-08-2024
117	453363	PAVITHRA M	139	09-08-2024

**Name of the Course & Branch: Information Technology**

Sl. No.	Application No.	Name of the Students	Cut off Marks (As per Govt. Norms)	Date of admission
118	453360	ASWATHI S	121	03-08-2024
119	453245	BASHERA MARIYAM A	110.5	03-08-2024
120	453393	SHAWN SAMUEL H	150.5	13-09-2024
121	453273	SIVAGANESH M	139	22-05-2024
122	453391	RAKCHA H	142	13-08-2024
123	453263	YAZHINI V	156	05-08-2024
124	453361	ARUTHRA S	129	03-08-2024
125	453383	KANYA S	141.5	23-08-2024
126	433391	SIVAPRABHAKARAN M	117	03-09-2024
127	453264	HARIHARAN P	123	29-08-2024
128	453251	VARSHIDA KANNIVADI BALAJI	165	14-08-2024
129	453252	KARTHIGEYAN M B	112	02-08-2024
130	453249	SHIVANAND M	161.5	04-08-2024
131	453271	NEIVE JOEL S J	137.5	09-08-2024
132	453261	KUBENDRA GURU S R	147.5	22-08-2024
133	453236	SURESH N	139	18-08-2024
134	433394	ROHITH R	143.5	23-09-2024
135	453260	MAHIMA SAI T	123	05-08-2024
136	453250	NAVEEN N	124.5	28-08-2024
137	453258	SRINITHI S	143.5	05-09-2024
138	453238	ANANDHARAJ G	151.5	06-09-2024
139	453244	SASMITHA SHREE C	135	09-09-2024
140	453266	ANUSHWA B	155.5	04-09-2024
141	453257	SAMUEL HENRY B	111.5	13-09-2024
142	453379	RENITHA R	125	16-08-2024
143	453241	HARSHINI R M	154.5	07-09-2024





**SRM MADURAI**  
**COLLEGE FOR ENGINEERING AND TECHNOLOGY**  
 Approved by AICTE, New Delhi | Affiliated to Anna University, Chennai



144	453237	SARVESH S	103.5	01-08-2024
145	453254	SAALIHA BEGAM M	129	15-08-2024
146	453267	SUVAM KUNTI S	95	22-08-2024
147	457370	DEEPALAKSHMI V	148.5	06-08-2024
148	453262	SRUTHI M	122	10-08-2024
149	453243	VISHWA G	165	08-08-2024
150	453259	VARSHA DEVI K H	159	08-09-2024
151	453248	DIVYA B	158.5	06-09-2024
152	453239	DEEPIKA R	156.5	07-09-2024
153	453242	NAVEENKUMAR N	84.5	04-09-2024
154	453240	VARSHINI K S	115	04-09-2024
155	453272	YOGA SAIRAM P	109	28-08-2024
156	453255	TAMALIKA K	111	27-08-2024
157	453256	SOWMIYA S	156.5	07-09-2024
158	453253	RAGUL M	121.5	04-09-2024
159	453268	VIGNESH A	142	05-08-2024
160	453247	MANJULA DEVI S	138.5	11-09-2024
161	453385	ARIHARAN M	122	08-08-2024
162	453286	CHARUKESH D	132.5	24-09-2024

**Name of the Course & Branch: Electrical and Electronics Engineering**

Sl. No.	Application No.	Name of the Students	Cut off Marks (As per Govt. Norms)	Date of admission
163	453356	VANDHANA A	104	27-08-2024
164	453373	SURYA PRAKASH K	123	07-09-2024
165	453344	YOGESHVARAN KOTTAIMANI	112.5	07-09-2024
166	453348	AMINA SHABNAM A R	115	05-09-2024
167	453346	SIVASACHIN C P	107	06-09-2024
168	453364	AKSHAYA V	102.5	08-09-2024
169	453397	JAYANTH H	121.5	13-09-2024
170	453351	RAVIN R	100.5	07-09-2024
171	453350	ARUN S J	152	08-09-2024
172	453353	MOHIT BALAJI S	113.5	08-09-2024

**Name of the Course & Branch: Electronics and Communication Engineering**

Sl. No.	Application No.	Name of the Students	Cut off Marks (As per Govt. Norms)	Date of admission
173	453374	MURUGANANTHAM V	102	11-09-2024
174	453327	SUJITH BALAJI S	118	07-09-2024



**SRM MADURAI**  
**COLLEGE FOR ENGINEERING AND TECHNOLOGY**  
Approved by AICTE, New Delhi | Affiliated to Anna University, Chennai



175	453310	AKCHARA T J S	124.5	13-09-2024
176	453366	ABDUL RAHEEM S	124	07-09-2024
177	453377	RAKESHPRABHU M	120.5	07-09-2024
178	453303	SANTHIYA M	116	27-09-2024
179	453337	GURUPRASATH T S	141.5	12-08-2024
180	453355	SWETHA N S	134.5	06-09-2024
181	453339	VIKRAM KRISHNAA S S	147	07-09-2024
182	453369	ANUGRAHA M G	133.5	09-08-2024
183	453401	KEERTHANA B	146	16-08-2024
184	453408	KARTHIK K	123	29-09-2024
185	453321	VASANTH B	156	27-08-2024
186	453332	SWETHA NACHIAR M	134.5	06-09-2024
187	453323	MUTHU LAKSHMI M	113.5	10-09-2024
188	453328	SWETHA SRI R	151.5	14-08-2024
189	453311	MAKANDA S S	137.5	27-08-2024
190	453329	BALAJI L	121.5	06-09-2024
191	453335	E CRISPIN A KATTAR	137.5	04-08-2024
192	453319	SAHANA J	118	13-09-2024
193	453314	SUVIDHARAN M	129	18-09-2024
194	453309	SRI SWETHA N	151.5	02-09-2024
195	453324	SAISHRI K J	148	07-09-2024
196	453318	VIKASH NARAYANAN G R	134	09-09-2024
197	453334	SITHIKAROBINA N	139.5	13-09-2024
198	453316	JEROME BENYAMIN C	113	08-09-2024
199	453312	SANJAI NAGAMUTHU V	135	06-08-2024
200	453331	SACHIN R	165	10-09-2024
201	453308	SANGEETHA S	148	07-09-2024
202	453320	KARISHMA C	116	06-08-2024
203	453384	MATHESH M	123	07-09-2024
204	453326	SHYAM SHANMUGAM M	149.5	06-09-2024
205	453325	IMAYANATHAN T P	129.5	04-09-2024
206	453315	BHAVANI K	144	27-08-2024
207	453313	CELESTIN D A	141	26-08-2024
208	453317	KAVIKEERTHANA V	130.5	07-09-2024
209	453330	AJAY KUMAR D	135	07-09-2024
210	453322	SRIMATHI S	113	07-09-2024
211	432842	KRITHIEESH KUMAAR K S	121.5	29-09-2024
212	433390	SIVAKUMARAN K R S	126.5	29-09-2024
213	453402	SANTHOSH R	118	16-08-2024
214	453336	MITHUN BHARATHI R M	160	06-09-2024
215	453354	JOSELYN SWEETY A	115.5	18-08-2024
216	453338	RAKSHAN M	139	07-09-2024
217	453270	HARISH A	139.5	05-09-2024



**SRM MADURAI**  
**COLLEGE FOR ENGINEERING AND TECHNOLOGY**  
 Approved by AICTE, New Delhi | Affiliated to Anna University, Chennai



218	453387	SHAHINA B	137.5	07-09-2024
<b>Name of the Course &amp; Branch: Mechanical Engineering</b>				
Sl. No.	Application No.	Name of the Students	Cut off Marks (As per Govt. Norms)	Date of admission
219	453341	DEEPAK K	101.5	10-05-2024
220	453352	MOHAMED IRFAN M	127.5	08-05-2024
221	453349	KABIL BALAN S	101.5	06-05-2024
222	453378	VETTRIVEL R	143.5	31-08-2024
223	453222	KRITHIK PRABHU V S	165	30-05-2024
224	433399	PRIYA RAHUL S	107.5	09-09-2024
225	453357	Mohammed Askar U	91	07-05-2024
226	453398	CHELLAPRKASH		07-09-2024
227	433395	NITHEESWARAN.A	129	02-09-2024
228	457371	VASANTH S	104.5	23-09-2024
<b>Name of the Course &amp; Branch: Civil Engineering</b>				
Sl. No.	Application No.	Name of the Students	Cut off Marks (As per Govt. Norms)	Date of admission
229	453358	JOSHUA MISHAEL K	126.5	06-08-2024
230	453343	KATHIR VELAN B	103	06-09-2024
231	453340	BAYHAN M	123	12-09-2024
232	453410	SAMY NATHAN M	146	27-09-2024
233	453342	HARIHARAN S	111	04-09-2024
234	453372	VASANTHAKUMAR M	135.5	25-09-2024
<b>Name of the Course &amp; Branch: Computer Science and Engineering (Artificial intelligence and Machine Learning)</b>				
Sl. No.	Application No.	Name of the Students	Cut off Marks (As per Govt. Norms)	Date of admission
235	453234	PRASANNA K	103.5	20-08-2024
236	453376	SNEKHA R	151	15-08-2024
237	433396	YOKESHWARAN M	121.5	24-09-2024
238	433393	MITHUNADEVI M	138.5	22-09-2024
239	453198	TRU TEJASAWINII	106.5	11-08-2024
240	453207	DEEPAK P	124.5	18-08-2024
241	453406	KARISHMA DHARSHINI M	107.5	21-09-2024
242	453229	SRINIVAS S M	127.5	15-08-2024
243	453197	SIVAANI T	109	15-08-2024



**SRM MADURAI**  
**COLLEGE FOR ENGINEERING AND TECHNOLOGY**  
 Approved by AICTE, New Delhi | Affiliated to Anna University, Chennai



244	453235	SHRI VISAGAN M V	151	04-09-2024
245	453942	IRANIYAN K	156.5	27-09-2024
246	459338	ASWATH NARAYANAN A B	132.5	21-09-2024
247	432843	PRIYA DHARSHINI P	126.5	29-09-2024
248	453206	DANIEL GIFTSON R	118	19-08-2024
249	453208	SIDHAARTHAN T	121	15-08-2024
250	453202	IRFAAN RIFAYIL Z	130.5	17-09-2024
251	433392	MOHAMMED THOUFIQ I	164	02-09-2024
252	453226	MITHILA SRI K B	156	27-08-2024
253	453227	SWETHA S	119.5	18-09-2024
254	453214	MOHAMMED MOINUDDIN S	144.5	25-09-2024
255	453225	MITHILESH R	160.5	20-08-2024
256	453228	ADNAN MUSTAFA A	128.5	09-05-2024
257	453215	KRISHNA KUMAR S	131	27-08-2024
258	432844	MIZWAR SHAHUL R	116	29-09-2024
259	436467	RIFFA A	122	25-09-2024
260	453209	POORNA JEYA ANAND N	107.5	25-08-2024
261	453216	PRASITHA DHARSHINI D	118	09-08-2024
262	453212	DHAARANI S	155.5	08-09-2024
263	453230	MARY DISNEY A	147.5	15-08-2024
264	453196	SRI HAARISH S	112.5	19-08-2024
265	453265	DIVYA DHARSHINI K V	144	08-08-2024
266	453345	JENNIFER CEROLINE A	167	29-09-2024

**PG Admitted Students**

Name of the Course & Branch : <b>MBA</b>				
Sl. No.	Application No.	Name of the Students	Cut off Marks (As per Govt. Norms)	Date of admission
1	216259	PAVITHRA S	58.45	03.07.2024
2	216244	SARAVANAKUMAR S	60.79	07.07.2024
3	216256	AKSHAYA M	64.32	10.08.2024
4	216258	LAKSHMI M	67.90	20.08.2024
5	216251	LOGANATHAN S	59.30	20.08.2024
6	216241	SUBASAN D	76.66	20.08.2024
7	216237	YUVA NAVEEN KUMAR M V	60.00	22.08.2024
8	216238	KRISHNAKANTH A	61.17	28.07.2024



**SRM MADURAI**  
**COLLEGE FOR ENGINEERING AND TECHNOLOGY**  
Approved by AICTE, New Delhi | Affiliated to Anna University, Chennai



9	216243	KALAIVANI N	81.69	31.07.2024
10	216269	RAHUL R	64.93	03.08.2024
11	216246	GOWTHAM R	58.82	05.08.2024
12	216239	VIJAYENDRAN K	60.22	05.08.2024
13	216250	KALEESWARAN G	64.42	12.08.2024
14	216252	VISHNU KUMAR K P	56.39	12.07.2024
15	216257	SRIDHARAN V	58.02	18.08.2024
16	216247	VISHVA N	61.63	19.08.2024
17	216249	KISHORE B P	64.81	21.07.2024
18	216240	YOGESHWARAN K	61.47	21.08.2024
19	216262	JOY SHREE N	75.35	25.07.2024
20	216248	SAJID M	59.11	26.08.2024
21	216260	ABISHEK G	55.63	27.08.2024
22	216261	MATHIROSHAN K	83.43	27.07.2024
23	216245	RAJA GANAPATHI R S	61.92	27.08.2024
24	216255	ELAMARAN K	57.44	28.08.2024
25	216242	RAKESH S	57.99	28.07.2024
26	216265	YOGESHWARAN B	57.17	03.08.2024
27	216266	MUKILAN J R	55.18	08.07.2024
28	216264	BARATH KISORE M	67.73	11.07.2024
29	216263	SANTHOSHKUMAR V	52.08	11.07.2024
30	216267	MIDUN SIDDARTHA K	63.57	13.07.2024
31	216270	SRIDEVI M	88.81	13.09.2024
32	216268	EZHILMATHI T	56.63	15.09.2024
33	216275	KARTHIKEYAN S	88.64	16.09.2024
34	216273	AKSHYA KISHOR KANNAN S	51.72	17.09.2024
35	216274	MADHUMITHA B	63.63	17.09.2024
36	107861	SIDDHARTH BALAJI I	68.28	20.09.2024



37	216861	KIRTHICK RAJ V	62.84	20.09.2024
Name of the Course & Branch : <b>M.E. ENGINEERING DESIGN</b>				
38	216236	MAHESH RAMU M V	75.96	09.07.2024
Name of the Course & Branch : <b>VLSI DESIGN</b>				
Sl. No.	Application No.	Name of the Students	Cut off Marks (As per Govt. Norms)	Date of admission
39	216271	KARTHIKA DEVI K	82.88	25.07.2024
40	216272	SARAVANA KUMAR S	66.66	25.07.2024

- iii. **Waiting list of the candidate in order of merit to be operative from the last date of joining of the first list candidate**  
 Nil

#### 15. Information of Infrastructure and Other Resources Available

**i. Number of Class Rooms and size of each**

No. of class rooms: 32

Size: Ranges from 78 to 83 Sq.m

**ii. Number of Tutorial rooms and size of each**

No. of Tutorial rooms: 12

Size: Ranges from 41 Sq. m

**iii. Number of Laboratories and size of each**

No. of Laboratories rooms: 56

Size: Ranges from 68 to 90 Sq. m

**iv. Number of Computer Centres with capacity of each**

No. Of Computer center: 32

Size: 140 & 200 Sqm





- v. **Central Examination Facility, Number of rooms and capacity of each Examination Facility:** 1

Size: Ranges from 41 Sq.m

- vi. **Online examination facility (Number of Nodes, Internet band width, etc.)**

Not Applicable

- vii. **Barrier Free Built Environment for disabled and elderly persons**

Institution Administration offers notions and implementation for enhancing the campus to a Barrier free environment for the differently abled persons of staff and students.



Ramp at the Ground floor of Main Building for differently abled persons



**SRM MADURAI**  
**COLLEGE FOR ENGINEERING AND TECHNOLOGY**  
Approved by AICTE, New Delhi | Affiliated to Anna University, Chennai



**viii. Fire and Safety Certificate**

Institution possesses valid “Fire and Safety Certificate” issued by the competent authority, Govt. of Tamilnadu.  
Certificate issued by the authority is attached below

**FIRE LICENCE**

(Under Section 13 of the Tamil Nadu Service Act No. 40 of 1985 and with  
Tamil Nadu Fire Service Rules 1990 - Appendix - III)

Licence Nos: 134/2024  
K. dis No: 1297/A/2024

Date: 18.04.2024

Licence is hereby granted under section 13 of the Tamil Nadu Fire Service act, 1985  
for Running **SRM MADURAI COLLEGE FOR ENGINEERING & TECHNOLOGY**  
(College) Within the Jurisdiction of **Manamadurai** at the Premises S.NO. 90/7B,  
10,11,12,13,3,4,5,6,8,9&93/2B,94/10A,10B4B,5,6,7,8,9A,9B&93/1 Pottapalayam Village,  
Manamadurai Taluk, Sivagangai District, subject to the conditions noted there on and  
such other condition as may be prescribed. The above said premises was inspected by Station  
Officer (Transport), Manamadurai on 18.04.2024.

The period of Validity of this Licence shall be from 18.04.2024 to 17.04.2025.

**CONDITIONS**

- 1) Fire fighting installations should be maintained and renewed properly.
- 2) Staffs should be trained and must have knowledge about usage of installed fire fighting equipment.
- 3) If there is any deviation from the govt. rules and Act the Licence issued will be cancelled without any notice.
- 4) Any erection of permanent or temporary structure should be intimated in this department.
- 5) All exits should be free of obstructions. Exits should be clearly visible and the routes to reach the exit shall be clearly marked.
- 6) Do's & Don'ts in time of emergencies should be available in a laminated hanging card.

(Office Seal with date)



  
District Officer,  
Fire and Rescue Services,  
Ramnathapuram District,  
(FAC) Sivagangai District,  
Sivagangai.

To,  
M/S. SRM MADURAI COLLEGE FOR ENGINEERING & TECHNOLOGY,  
S.NO. 90/7B, 10, 11, 12, 13, 3, 4, 5, 6, 8, 9 & 93/2B, 94/10A, 10B4B, 5, 6, 7, 8, 9A, 9B & 93/1  
Pottapalayam Village, Manamadurai Taluk, Sivagangai District.

**ix. Hostel Facilities**

Girl's Hostel		Boy's Hostel		Location	Hostel Facility
No of Rooms	Hostel Capacity	No of Rooms	Hostel Capacity		
10	100	46	120	Within Campus	Owned



# SRM MADURAI

## COLLEGE FOR ENGINEERING AND TECHNOLOGY

Approved by AICTE, New Delhi | Affiliated to Anna University, Chennai



### x. Number of Library books/ebooks/Titles/Journals available (Programme-wise)

S.No	Department	Books		Journals		E-Resources
		Titles	Volumes	National	International	
1	Computer Science & Engineering(CSE, AIML, Cyber Security)	1188	3950	18	18	
2.	Information Technology(IT & AIDS)	974	2054	12	12	



3.	Electronics and Communication Engineering	1097	2995	6	6	DELNET / NDLI
4.	Electrical and Electronics Engineering	840	2547	6	6	
5.	Civil Engineering	713	2799	6	6	
6.	Mechanical Engineering	844	2914	6	6	
7.	PG-Engineering Design	245	749	6	6	
8.	PG-VLSI	268	679	6	6	
9.	Science & Humanities	776	2282	4	-	
10.	MBA	152	920	6	6	
11.	General	816	1211	-	-	
Total		7913	23100	76	72	

**xi. List of online National/International Journals subscribed**

The List of following International Journals is available in Central Library: -

Sl. No	Journals Name	Issues
<b>COMPUTER SCIENCE AND ENGINEERING</b>		
1	International Journal of Computer Science and Programming Language	2
2	Journal of Advanced Research in Computer Technology & Software Applications	2
3	International Journal of Human Computer Interaction and Data Mining	2
4	International Journal of CSE and IT Research	Hy
5	International Journal of Fuzzy Systems and Rough Systems	4
6	International Journal of Algorithms Design and Analysis	Hy
<b>ARTIFICIAL INTELLIGENCE AND MACHINE LEARNING</b>		
1	Computational Intelligence and Machine Learning	3
2	Technoarte Txn on Advances in Computer Applications in Technology	3
3	Journal of Advancements in Robotics	3
4	Global Journal of Computational Intelligence Research	Hy
5	Current Development in Artificial Intelligence	Hy
6	International Journal of Applied Artificial Intelligence in Engineering System	Hy
<b>ARTIFICIAL INTELLIGENCE DATA SCIENCE</b>		
1	International Journal of Computational Intelligence Research and Applications	HY
2	International Journal of Hybrid Computational Intelligence	Hy





3	International Journal of Intelligent Information Processing	Hy
4	Journal of Intelligent Learning Systems and Applications	Hy
5	International Journal of Grid Computing and Multi Agent Systems	Hy
6	International Journal of Logic Based Intelligent Systems	Hy
CYBER SECURITY		
1	Global Journal of Computer and Internet Security	3
2	Journal of Network Security	3
3	Journal of Cybernetics and Systems	Hy
4	International Journal of Network Security and Research	Hy
5	International Journal of Secure Software Engineering and Tech	Hy
6	International Journal of Intelligent Information Processing	2
INFORMATION TECHNOLOGY		
1	International Journal of Computing & Information Technology (IJCIT)	2
2	International Journal on Information & Communication Technologies	4
3	International Journal of Neural Networks and Applications	Hy
4	Journal of Web Engineering and Technology	3
5	Technoarte Txn. on Internet of Things and Cloud Computing Research	3
6	Global Journal of Networks and Applications	3
ELECTRONICS AND COMMUNICATION ENGINEERING		
1	International Journal of Micro and Nano Electronics, Circuits and systems	HY
2	International Journal of Signal Processing Systems	HY
3	International Journal of Engineering Research in Electronics and Communication Engineering	3
4	Journal of Advanced Research in Geo Sciences and Remote Sensing	HY
5	Journal of Telecommunication, Switching Systems and Networks	3
6	International Journal of satellite Communication & Remote sensing	HY
ELECTRICAL AND ELECTRONICS ENGINEERING		
1	International Journal of Innovations in Electrical Power Systems	HY
2	International Journal of Advances in Power Electronics	HY
3	International Journal of Electrical and Electronics Engineering Research	HY
4	International Journal of Electrical Machines and Drives	HY
5	International Journal of Electrical Power Generation, Transmission and Distribution Researches	HY
6	International Journal of Microwave Engineering and Technology	HY
MECHANICAL ENGINEERING		
1	International Journal of Thermal Energy & Applications	HY
2	International Journal of Manufacturing and Material Processing	HY
3	International Journal of Robotics and Automation	HY
4	International Journal of Heat and Mass Transfer	HY
5	International Journal of Innovative Research in Science and Techniques	HY
6	International Journal of Fluid Mechanics and Acoustical Engineering	HY



	CIVIL ENGINEERING	
1	International Journal of Civil Building Engineering	HY
2	International Journal of Civil Engineering and Environmental Systems	HY
3	International Journal of Inventi Impact: Civil Structures New Release	Q
4	International Journal of Civil Engineering and Construction Technology	HY
5	International Journal of Civil Engineering and Architecture Engineering	HY
6	International Journal of Hydropower and Civil Engineering	HY
	PG – ENGINEERING DESIGN	
1	International Journal of Metallurgical & Material Science and Engineering	HY
2	International Journal of Design Making in Manufacturing	HY
3	International Journal of Advanced in Thermal Sciences and Engineering	HY
4	International Journal of Novel Materials	HY
5	International journal of Green Manufacturing	HY
6	International Journal of Materials Manufacturing Design	HY
	PG - VLSI	
1	International Journal of Analog Circuits, VLSI and Bioelectronics	HY
2	International Journal of Advances VLSI Design	HY
3	Global Journal of Embedded System and Engineering Research	3
4	Journal of VLSI Design Tools and Technology	3
5	International Journal of VLSI Design and Technology	3
6	International Journal of Radio Frequency Design	HY

The List of following National Journals is available in Central Library:-

Sl. No	Journals Name	Issues
COMPUTER SCIENCE ENGINEERING		
1	INVENTI Impact: Image & Video Processing	4
2	INVENTI Impact: Distributed Sensor Networks	4
3	Indian Journal of Advances in Computer Science and Engineering	2
4	Indian Journal of Advance Networking and Computer Engineering	2
5	INVENTI Impact: Algorithm	4
6	INVENTI Impact: Telecom	4
ARTIFICIAL INTELLIGENCE AND DATA SCIENCE		
1	Journal of Innovations in Data science And Big Data Management	3
2	Journal on Cloud Computing	Q
3	Technoarate Txn on Intelligent Data Mining and Knowledge	3
4	ICTACT Journal on Soft Computing	Q
5	Indian Journal of Computer Science	Q
6	Indian Journal of Computer Graphics and Visualization	HY
ARTIFICIAL INTELLIGENCE AND MACHINE LEARNING		
1	Indian J. of Computational and Mathematical Science	2
2	Indian J. of Computational Intelligence Research	2





3	INVENTI Impact: Artificial Intelligence	4
4	INVENTI Impact: Embedded Systems	4
5	INVENTI Impact: Human-Computer Interaction	4
6	INVENTI Impact: Modeling & Simulation	4
CYBER SECURITY		
1	INVENTI Impact: Information Security	4
2	Journal of Network Security Computer Networks	3
3	Indian Journal of Computer and Internet Security	2
4	Indian Journal of Information Security and Computer	2
5	Journal of Cyber Security in Computer Systems	3
6	Indian Journal of Network Security and Research	Hy
INFORMATION TECHNOLOGY		
1	INVENTI Impact: Computer Networks & Communications	4
2	INVENTI Impact: Multimedia	4
3	Patent Journal: Information Technology	4
4	Indian Journal of Networking and Technology	Hy
5	Indian Journal of Mobile Communication, Networking and Applications	Hy
6	ICTACT Journal on Communication Technology	Q
ELECTRONICS AND COMMUNICATION ENGINEERING		
1	Indian Journal of Industrial electronics and Applications	HY
2	Indian Journal of Electronics and Tele Communications Engineering	HY
3	Journal of Microelectronics and Solid-State Devices	HY
4	Journal of Embedded Systems and Processing	3
5	Journal of Analog and Digital Communications	3
6	Journal of Analog and Digital Devices	3
ELECTRICAL AND ELECTRONICS ENGINEERING		
1	Journal of Controller & Converters	3
2	Journal of Digital Integrated Circuits in Electrical Devices	3
3	Indian Journal of Semiconductor Science & Technology	HY
4	Indian Journal of Advances in Electrical Engineering	HY
5	Indian Journal of Electrical Engineering & Computer Engineering	HY
6	Current Development in Electrical Engineering	HY
MECHANICAL ENGINEERING		
1	Journal of Advancements in Material Engineering	3
2	Journal of Tribology Research	HY
3	Journal of Nanocomposites and Nanoceramics	HY
4	Indian Journal of Production and Quality Engineering	HY
5	Indian Journal of Innovative Research in Science & Techniques	HY
6	Indian Journal of Theoretical and Applied Mechanics	HY



CIVIL ENGINEERING		
1	Indian Journal of Civil Engineering and Technology Research	HY
2	Indian Journal of Civil Constructed Facilities	HY
3	Indian Journal of Civil Engineering and Applications	HY
4	Advanced Development in Indian Civil Engineering	HY
5	Recent Trends in Civil Engineering and Technology	3
6	Indian Journal of Materials in Civil Engineering	2
PG – ENGINEERING DESIGN		
1	Journal of Mechanical Robotics	3
2	Journal of Mechatronics Machine Design & Manufacturing	3
3	Journal of Experimental & Applied Mechanics	3
4	Indian Journal of Design Research and Development	HY
5	Journal of Thermal Energy Systems	3
6	Indian Journal of Production Design	HY
PG – VLSI		
1	Indian Journal of VLSI Design and Embedded Systems	HY
2	Journal of Electronic and Optical Communications	3
3	Indian Journal of Microelectronics & VLSI Design	HY
4	Journal of Electronic Design Technology	3
5	Global Journal of Embedded system in Engineering Research	HY
6	Advances in wireless and mobile communication	HY
SCIENCE AND HUMANITIES		
1	Indian Journal of Pure & Applied Physics	12
2	Indian Journal of Chemical Technology	6
3	Indian Journal of Mathematics	3
4	International Journal of English Research	6
5	Journal of Materials Science: Materials in Electronics	12
6	Journal of Optics	12

### **xii. National Digital Library (NDL) subscription details**

Our Institution (PID No: 1-5729671) has been implementing “mandatory internship policy for students” as per model internship guidelines of AICTE will be registered for “National Digital Library Club” (NDLI) with URL:

<https://club.ndl.iitkgp.ac.in/>. The NDL provides the services listed below (link: <https://ndl.iitkgp.ac.in/>).

1. NDLI offers services tailored to the needs of particular user groups, such as exam preparation for high school and college students as well as job seekers.
2. Services are also offered for general learners and researchers. The NDLI provides interface support for the top 10 spoken languages in India and is built to hold content in any language.



3. It is designed to accommodate students of all academic levels, including researchers and lifelong learners, all academic subjects, all widely used access devices, and students with disabilities.
4. It is made to make it easier for academics to conduct interconnected research from many sources and for individuals to benefit from best practices from around the world.
5. The following services are provided in the "Browse" button on the left top side of the NDLI website <https://www.ndl.gov.in/>, by kind, by subject, by source, and by learning resource.

**xiii. List of Major Equipment/Facilities in each Laboratory/Workshop**

Department	Name of the Laboratory	Lab / Major Equipment's
Civil Engineering	CAD Laboratory	<ul style="list-style-type: none"> <li>• 17"Graphics Terminal P IV Processor</li> <li>• 80GB HRD</li> <li>• 1gb Ram-30no's</li> <li>• Laser Printer-1no</li> <li>• Plotter A2 Size-1no</li> </ul>
	Concrete Testing Lab	<ul style="list-style-type: none"> <li>• Slump Cone Apparatus</li> <li>• Compaction Factor Apparatus</li> <li>• Vee Bee Test Apparatus</li> <li>• Concrete Cube Mould</li> </ul>
	Environmental Engineering Lab	<ul style="list-style-type: none"> <li>• PH Meter Turbidity Meter</li> <li>• Conductivity Meter</li> <li>• Bod Incubator</li> <li>• Cod Incubator</li> <li>• Muffle Furnace</li> </ul>
	Fluid Mechanics Lab I	<ul style="list-style-type: none"> <li>• Kaplan Turbine-1no</li> <li>• Francis Turbine-1no</li> <li>• Pelton Turbine-1no</li> <li>• Orifice Meter-No1</li> <li>• Rotometer-1no</li> </ul>
	Highway Material Testing Lab	<ul style="list-style-type: none"> <li>• Aggregate Impact Testing Machine Blains Apparatus Ring and Ball Apparatus</li> <li>• Marshall Testing Machine</li> </ul>
	Hydraulic Engineering Lab	<ul style="list-style-type: none"> <li>• Barnoulli Theorem Verification Apparatus</li> <li>• Pittot Tube Apparatus</li> <li>• Orifice Meter</li> <li>• Venturi Meter</li> </ul>
	Soil Mechanics Lab	<ul style="list-style-type: none"> <li>• Hydro Meter Sieves</li> <li>• UTM Thermometer</li> </ul>
	Strength of Material Lab	<ul style="list-style-type: none"> <li>• UTM of Minimum 400kn Capacity Machine</li> <li>• Torsion Test Machine</li> <li>• Hardness Test Machine</li> <li>• Compressometer</li> </ul>
	Survey Lab - II	<ul style="list-style-type: none"> <li>• Theodolites-4no's</li> <li>• Total Station 1</li> </ul>
	Survey Lab I	<ul style="list-style-type: none"> <li>• Theodolites-7no's</li> <li>• Dumpy Level-7no's</li> <li>• Plain Table-7no's</li> <li>• Pocket Sterescope-1no</li> <li>• Ranging Rods-4nos</li> </ul>



**SRM MADURAI**  
**COLLEGE FOR ENGINEERING AND TECHNOLOGY**  
 Approved by AICTE, New Delhi | Affiliated to Anna University, Chennai



Department	Name of the Laboratory	Lab / Major Equipment's
Computer Science & Engineering	Case Tools Lab	<ul style="list-style-type: none"> <li>Client Systems-30no's</li> <li>Printer Dot Matrix-2no's</li> <li>Ups 10 Kva-1no</li> <li>A/C-4</li> <li>Chairs-30no's</li> </ul>
	Visual Programming Lab	<ul style="list-style-type: none"> <li>Client Systems-30no's</li> <li>Printer Dot Matrix-2no's</li> <li>Ups 10 Kva-1no</li> <li>A/C-4</li> <li>Chairs-30no's</li> </ul>
	Compiler Design Lab	<ul style="list-style-type: none"> <li>Client Systems-30no's</li> <li>Printer Dot Matrix-2no's</li> <li>Ups 10 Kva-1no</li> <li>A/C-4</li> <li>Chairs-30no's</li> </ul>
	Computer Practice - I	<ul style="list-style-type: none"> <li>Serve-No1 Client Systems-No's30 Printer Dot Matrix-No's2 Ups 10 Kva-No1 A/C-No4 Printer Laser-1</li> </ul>
	Computer Practice - II	<ul style="list-style-type: none"> <li>Client Systems-30no's</li> <li>Printer Dot Matrix-2no's</li> <li>Ups 15 Kva-1no</li> <li>A/C-4</li> <li>Chairs-30no's</li> </ul>
	Database Management System Lab	<ul style="list-style-type: none"> <li>Client Systems - 30no's</li> <li>Printer Dot Matrix - 2no's</li> <li>A/C Ton- 4</li> <li>Chairs-30</li> <li>Dvd Writers-5</li> </ul>
	Graphics & Multimedia Lab	<ul style="list-style-type: none"> <li>Clients Systems-30no's</li> <li>Printer Dot Matrix-2no's</li> <li>Printer Laser Jet-1no</li> <li>Ups 10 Kva-1no</li> <li>A/C-4no's</li> </ul>
	Internet and Java Programming Lab	<ul style="list-style-type: none"> <li>Client Systems-30no's</li> <li>Printer Dot Matrix-2no's</li> <li>Ups 10 Kva-1no</li> <li>A/C-No's4</li> <li>Chairs-30no's</li> </ul>
	Operating System Lab	<ul style="list-style-type: none"> <li>Client Systems - 30nos</li> <li>Printer Dot Matrix - 2nos</li> <li>Printer Laser Jet-1no</li> </ul>
Electrical and Electronics Engineering	Software Development Lab	<ul style="list-style-type: none"> <li>Client Systems-30no's</li> <li>Printer Dot Matrix-2no's</li> <li>Printer Laser Jet-1 No</li> <li>Ups 10 Kva-1no</li> <li>A/C-4no's</li> </ul>
	Control Systems Lab	<ul style="list-style-type: none"> <li>Servomotor Type 0 &amp; Type 1 System</li> </ul>
	Electrical Machines Lab I	<ul style="list-style-type: none"> <li>Alternators</li> <li>Dc Generators &amp; Motors</li> </ul>



**SRM MADURAI**  
**COLLEGE FOR ENGINEERING AND TECHNOLOGY**  
 Approved by AICTE, New Delhi | Affiliated to Anna University, Chennai



Department	Name of the Laboratory	Lab / Major Equipment's
Engineering		<ul style="list-style-type: none"> <li>Synchronous Motor</li> <li>Single Phase Induction Motor</li> <li>Three Phase Induction Motor</li> </ul>
	Electrical Machines Lab II	<ul style="list-style-type: none"> <li>Three Phase Slip Ring Induction Motor</li> <li>Three Phase Synchronous Motor</li> <li>Three Phase Auto Transformer</li> </ul>
	Linear & Digital Integrated Circuits Lab	<ul style="list-style-type: none"> <li>Counters Kit</li> <li>Shift Registers Kit</li> <li>Multiplex/De-Multiplex Kit</li> <li>Timer IC Application Kit</li> </ul>
	Measurements & Instrumentation Lab	<ul style="list-style-type: none"> <li>CRO30mhz-2</li> <li>LVDT-1</li> <li>Digital To Analog Trainer Kit</li> <li>Current Transformer Trainer Kit</li> </ul>
	Mechatronics Lab	<ul style="list-style-type: none"> <li>Pneumatic Trainer Kit</li> <li>Electro Pneumatic Kit</li> <li>Servo Controlled Open Loop PID Controller</li> </ul>
	Power Electronics & Drives Lab	<ul style="list-style-type: none"> <li>MATLAB</li> <li>PSIM</li> <li>Single Phase &amp; Three Phase Rectifier</li> <li>Single Phase &amp; Thre Phase Inveter Mosfet-Igbt</li> </ul>
	Power System Simulation Lab	<ul style="list-style-type: none"> <li>MATLAB</li> <li>ETAP</li> <li>Personal Computer Laser Printer</li> </ul>
Electronics & Communication Engg	Computer Networks Lab	<ul style="list-style-type: none"> <li>Ethernet Lan Trainer Kit</li> <li>Wireless Lan Trainer Kit</li> <li>Network Simulation Kit</li> </ul>
	Vlsi Research Lab	<ul style="list-style-type: none"> <li>Computer Systems - 25</li> <li>Fpga Trainer Kits</li> <li>HDL Tools</li> </ul>
	Circuits and Devices Laboratory II	<ul style="list-style-type: none"> <li>Digit Multimeter</li> <li>Digit Ammeter</li> <li>Digit Voltmeter</li> </ul>
	Digital Communication Lab	<ul style="list-style-type: none"> <li>Antenna Trainer Kit</li> <li>Analog &amp; Digital Comm Trainer Kit</li> </ul>
	Digital Electronics & Lic	<ul style="list-style-type: none"> <li>IC Trainer Kit</li> <li>IC Tester</li> <li>CRO</li> <li>AFO</li> </ul>
	Digital Signal Processing Lab	<ul style="list-style-type: none"> <li>Tms320C5Z Matlab Software Computer System</li> </ul>
	Electrical Circuits Lab	<ul style="list-style-type: none"> <li>Trainer Kit</li> <li>AFO,</li> <li>CRO</li> </ul>
	Micro Processors & Controllers	<ul style="list-style-type: none"> <li>8086,8085,8051,Kit Interface Kit</li> </ul>
	VLSI Lab	<ul style="list-style-type: none"> <li>FPGA Trainer Kits</li> <li>HDL Tools Computer Systems</li> </ul>



**SRM MADURAI**  
**COLLEGE FOR ENGINEERING AND TECHNOLOGY**  
 Approved by AICTE, New Delhi | Affiliated to Anna University, Chennai



Department	Name of the Laboratory	Lab / Major Equipment's
First Year/Other	Autocad Lab	<ul style="list-style-type: none"> <li>Computer Autocad 2011</li> </ul>
	Chemistry Laboratory-I	<ul style="list-style-type: none"> <li>Burette Stand Conical Flask</li> <li>Viscometer</li> <li>Pipette</li> <li>Funnel Tiles Digital Balance</li> </ul>
	Circuits and Devices Laboratory I	<ul style="list-style-type: none"> <li>Digital Multimeter</li> <li>Digital Voltmeter</li> <li>Ammeter</li> </ul>
	Electronics Circuits Lab	<ul style="list-style-type: none"> <li>CRO</li> <li>Function Generator</li> <li>Computer System</li> </ul>
	Engineering Chemistry - II	<ul style="list-style-type: none"> <li>Flame Photometer</li> <li>SpectroPhotometer</li> <li>Potentometer</li> <li>Conductometer</li> <li>Ph Meter</li> </ul>
	Engineering Practice Lab -I	<ul style="list-style-type: none"> <li>Single Phase Resistive Load Rectifier Trianer Kit</li> <li>FM Radio Kit</li> </ul>
	Engineering Practice Lab -II	<ul style="list-style-type: none"> <li>Wise Vernier</li> <li>Caliper</li> <li>Screw Gauge</li> </ul>
	English / Communication Skill	<ul style="list-style-type: none"> <li>Computer - No's19</li> <li>Creative Speakers -No's19</li> <li>Head Phones-No's19</li> <li>Wipro 192535</li> <li>Dot Matrix Printer-1</li> </ul>
Information Technology	Data Structures Lab	<ul style="list-style-type: none"> <li>Client Systems-30no's</li> <li>Printer Dot Matrix-2no's</li> <li>Ups 10 Kva-1no</li> <li>A/C-4 no</li> <li>Chairs-30no's</li> </ul>
	Linux Lab	<ul style="list-style-type: none"> <li>Client Systems-30no's</li> <li>Printer Dot Matrix-2no's</li> <li>Ups 10 Kva-1no</li> <li>A/C-4 nos.</li> <li>Chairs-30no's</li> </ul>
	Middleware Lab	<ul style="list-style-type: none"> <li>Client Systems-30no's</li> <li>Printer Dot Matrix-2no's</li> <li>Ups 10 Kva-1no</li> <li>A/C-4 nos.</li> <li>Chairs-30 no's</li> </ul>
	Object Oriented Lab	<ul style="list-style-type: none"> <li>Client Systems-30</li> <li>Printer-5</li> <li>Server-1</li> </ul>
	Oracle Lab	<ul style="list-style-type: none"> <li>Client Systems-30no's</li> <li>Printer Dot Matrix-2no's</li> <li>Ups 10 Kva-1no</li> <li>A/C-No's4</li> <li>Chairs-30no's</li> </ul>





**SRM MADURAI**  
**COLLEGE FOR ENGINEERING AND TECHNOLOGY**  
 Approved by AICTE, New Delhi | Affiliated to Anna University, Chennai



Department	Name of the Laboratory	Lab / Major Equipment's
	Unix Lab	<ul style="list-style-type: none"> <li>Client Systems-30no's</li> <li>Printer Dot Matrix-2no's</li> <li>Ups 10 Kva-1no</li> <li>A/C-No's4</li> <li>Chairs-30no's</li> </ul>
Mechanical Engineering	Autocad Laboratory	<ul style="list-style-type: none"> <li>17"Graphics Terminal PIV Processor 80gb HRD,</li> <li>1GB Ram-30no's</li> <li>Laser Print-1no</li> <li>Plotter A2 Size-1no</li> </ul>
	CAD/CAM	<ul style="list-style-type: none"> <li>Computer</li> <li>Autocad</li> </ul>
	Design and Fabrication Lab	<ul style="list-style-type: none"> <li>Center Lathe Bench</li> <li>Drilling Machine</li> <li>Welding Machine</li> </ul>
	Dynamics Laboratory	<ul style="list-style-type: none"> <li>Cam Profile Analyzer-1no</li> <li>Universal Governor Apparatus-1no</li> <li>Motoised Gyroscope-1no</li> <li>DBM-1no</li> <li>SDB-1</li> </ul>
	Engg Design Research Lab	<ul style="list-style-type: none"> <li>Client Systems-30no's</li> <li>Printer Dot Matrix-2no's</li> <li>Pro E Software</li> </ul>
	Fluid Mechanics & Machinery Lab	<ul style="list-style-type: none"> <li>Orifice Meter</li> <li>Venturi Meter</li> <li>Roto Meter</li> </ul>
	Manufacturing Technology Laboratory - II	<ul style="list-style-type: none"> <li>Radial Drilling Machine-1no</li> <li>Slotting Machine-1no</li> <li>Shaping Machine-1no</li> <li>Surface Grinding Machine-1no</li> </ul>
	Manufacturing Technology Laboratory-I	<ul style="list-style-type: none"> <li>Centre Lathe-13no's</li> <li>Moulding Table Set-5no's</li> <li>Tool Dynamometer-1no</li> <li>Microscope-1no</li> </ul>
	Metrology and Measurement Laboratory	<ul style="list-style-type: none"> <li>Floating Carriage Micrometer-1no</li> <li>Profile Projector-1no</li> <li>Pneumatic Comparater-1no</li> <li>Auto Collimator</li> </ul>
	Strength of Materials Laboratory	<ul style="list-style-type: none"> <li>Universal Testing Machine-1no</li> <li>Torsion Testing Machine-1no</li> <li>Impact Testing Machine-1no</li> </ul>
	Thermal Laboratory I	<ul style="list-style-type: none"> <li>Data Acquisition System With Any One of Above Engine-1no</li> <li>S.C Four Stoke Aircooled Pertal Engine-1no</li> </ul>
	Thermal Laboratory II	<ul style="list-style-type: none"> <li>Ic Engine</li> <li>2 Stroke</li> <li>4 Stroke</li> <li>4 Stroke Diesel Engine</li> </ul>



Department	Name of the Laboratory	Lab / Major Equipment's
Physics	Physics Laboratory - I	<ul style="list-style-type: none"> <li>• Spectrometer</li> <li>• Travelling Microscope</li> <li>• Carey Foster's Bridge</li> <li>• Optical Fibre Attenuation Kit</li> <li>• Lee's Disc</li> </ul>
	Physics Laboratory - II	<ul style="list-style-type: none"> <li>• Spectrometer</li> <li>• Travelling Microscope</li> <li>• Ultrasonic Interferometer</li> <li>• Hysteris Loss meterc</li> </ul>

**xiv. List of Experimental Setup in each Laboratory/Workshop**

Department	Name of the Laboratory	Lab / Major Equipment's
Civil Engineering	Concrete Testing Lab	<ul style="list-style-type: none"> <li>• Slump Cone Apparatus</li> <li>• Compaction Factor Apparatus</li> <li>• Vee Bee Test Apparatus</li> <li>• Concrete Cube Mould</li> </ul>
	Environmental Engineering Lab	<ul style="list-style-type: none"> <li>• PH Meter Turblidity Meter</li> <li>• Conductivity Meter</li> <li>• Bod Incubator</li> <li>• Cod Incubator</li> <li>• Muffle Furnace</li> </ul>
	Fluid Mechanics Lab I	<ul style="list-style-type: none"> <li>• Kaplan Turbine-1no</li> <li>• Francise Turbine-1no</li> <li>• Pelton Turbine-1no</li> <li>• Orifice Meter-No1</li> <li>• Rotometer-1no</li> </ul>
	Highway Material Testing Lab	<ul style="list-style-type: none"> <li>• Aggregate Impact Testing Machine Blains Apparatus Ring and Ball Apparatus</li> <li>• Marshall Testing Machine</li> </ul>
	Hydraulic Engineering Lab	<ul style="list-style-type: none"> <li>• Barnoulli Theorem Verification Apparatus</li> <li>• Pittot Tube Apparatus</li> <li>• Orifice Meter</li> <li>• Venturi Meter</li> </ul>
	Soil Mechanics Lab	<ul style="list-style-type: none"> <li>• Hydro Meter Sieves</li> <li>• UTM Thermometer</li> </ul>
	Strength of Material Lab	<ul style="list-style-type: none"> <li>• UTM of Minimum 400kn Capacity Machine</li> <li>• Torsion Test Machine</li> <li>• Hardness Test Machine</li> <li>• Compressometer</li> </ul>
	Survey Lab - II	<ul style="list-style-type: none"> <li>• Thedolites-4no's</li> <li>• Total Station 1</li> </ul>
	Survey Lab I	<ul style="list-style-type: none"> <li>• Thedolites-7no's</li> <li>• Dumpy Level-7no's</li> <li>• Plain Table-7no's</li> <li>• Pocket Sterescope-1no</li> <li>• Ranging Rods-4nos</li> </ul>



**SRM MADURAI**  
**COLLEGE FOR ENGINEERING AND TECHNOLOGY**  
 Approved by AICTE, New Delhi | Affiliated to Anna University, Chennai



Department	Name of the Laboratory	Lab / Major Equipment's
Electrical and Electronics Engineering	Control Systems Lab	<ul style="list-style-type: none"> <li>Servomotor Type 0 &amp; Type 1 System</li> </ul>
	Electrical Machines Lab I	<ul style="list-style-type: none"> <li>Alternators</li> <li>Dc Generators &amp; Motors</li> <li>Synchronous Motor</li> <li>Single Phase Induction Motor</li> <li>Three Phase Induction Motor</li> </ul>
	Electrical Machines Lab II	<ul style="list-style-type: none"> <li>Three Phase Slip Ring Induction Motor</li> <li>Three Phase Synchronous Motor</li> <li>Three Phase Auto Transformer</li> </ul>
	Linear & Digital Integrated Circuits Lab	<ul style="list-style-type: none"> <li>Counters Kit</li> <li>Shift Registers Kit</li> <li>Multiplex/De-Multiplex Kit</li> <li>Timer IC Application Kit</li> </ul>
	Measurements & Instrumentation Lab	<ul style="list-style-type: none"> <li>CRO30mhz-2</li> <li>LVDT-1</li> <li>Digital To Analog Trainer Kit</li> <li>Current Transformer Trainer Kit</li> </ul>
	Mechatronics Lab	<ul style="list-style-type: none"> <li>Pneumatic Trainer Kit</li> <li>Electro Pneumatic Kit</li> <li>Servo Controlled Open Loop PID Controller</li> </ul>
	Power Electronics & Drives Lab	<ul style="list-style-type: none"> <li>MATLAB</li> <li>PSIM</li> <li>Single Phase &amp; Three Phase Rectifier</li> <li>Single Phase &amp; Thre Phase Inveter Mosfet-Igbt</li> </ul>
	Power System Simulation Lab	<ul style="list-style-type: none"> <li>MATLAB</li> <li>ETAP</li> <li>Personal Computer Laser Printer</li> </ul>
Electronics & Communication Engg	Computer Networks Lab	<ul style="list-style-type: none"> <li>Ethernet Lan Trainer Kit</li> <li>Wireless Lan Trainer Kit</li> <li>Network Simulation Kit</li> </ul>
	VLSI Research Lab	<ul style="list-style-type: none"> <li>Computer Systems - 25</li> <li>Fpga Trainer Kits</li> <li>HDL Tools</li> </ul>
	Circuits and Devices Laboratory II	<ul style="list-style-type: none"> <li>Digit Multimeter</li> <li>Digit Ammeter</li> <li>Digit Voltmeter</li> </ul>
	Digital Communication Lab	<ul style="list-style-type: none"> <li>Antenna Trainer Kit</li> <li>Analog &amp; Digital Comm Trainer Kit</li> </ul>
	Digital Electronics & Lic	<ul style="list-style-type: none"> <li>IC Trainer Kit</li> <li>IC Tester</li> <li>CRO</li> <li>AFO</li> </ul>
	Digital Signal Processing Lab	<ul style="list-style-type: none"> <li>Tms320C5Z Matlab Software Computer System</li> </ul>
	Electrical Circuits Lab	<ul style="list-style-type: none"> <li>Trainer Kit</li> <li>AFO,</li> <li>CRO</li> </ul>
	Micro Processors & Controllers	<ul style="list-style-type: none"> <li>8086,8085,8051,Kit Interface Kit</li> </ul>



**SRM MADURAI**  
**COLLEGE FOR ENGINEERING AND TECHNOLOGY**  
 Approved by AICTE, New Delhi | Affiliated to Anna University, Chennai



Department	Name of the Laboratory	Lab / Major Equipment's
	VISI Lab	<ul style="list-style-type: none"> <li>FPGA Trainer Kits</li> <li>HDL Tools Computer Systems</li> </ul>
First Year/Other	Autocad Lab	<ul style="list-style-type: none"> <li>Computer Autocad 2011</li> </ul>
	Chemistry Laboratory-I	<ul style="list-style-type: none"> <li>Burette Stand Conical Flask</li> <li>Viscometer</li> <li>Pipette</li> <li>Funnel Tiles Digital Balance</li> </ul>
	Circuits and Devices Laboratory I	<ul style="list-style-type: none"> <li>Digital Multimeter</li> <li>Digital Voltmeter</li> <li>Ammeter</li> </ul>
	Electronics Circuits Lab	<ul style="list-style-type: none"> <li>CRO</li> <li>Function Generator</li> <li>Computer System</li> </ul>
	Engineering Chemistry - II	<ul style="list-style-type: none"> <li>Flame Photometer</li> <li>SpectroPhotometer</li> <li>Potentometer</li> <li>Conductometer</li> <li>Ph Meter</li> </ul>
	Engineering Practice Lab -I	<ul style="list-style-type: none"> <li>Single Phase Resistive Load Rectifier Trianer Kit</li> <li>FM Radio Kit</li> </ul>
	Engineering Practice Lab -II	<ul style="list-style-type: none"> <li>Wise Vernier</li> <li>Caliper</li> <li>Screw Gauge</li> </ul>
	English / Communication Skill	<ul style="list-style-type: none"> <li>Computer - No's19</li> <li>Creative Speakers -No's19</li> <li>Head Phones-No's19</li> <li>Wipro 192535</li> <li>Dot Matrix Printer-1</li> </ul>
Mechanical Engineering	CAD/CAM Lab	<ul style="list-style-type: none"> <li>CNC Milling Machine</li> <li>CNC Turning Lathe</li> <li>CAM Software</li> </ul>
	Design and Fabrication Lab	<ul style="list-style-type: none"> <li>Center Lathe Bench</li> <li>Drilling Machine</li> <li>Welding Machine</li> </ul>
	Dynamics Laboratory	<ul style="list-style-type: none"> <li>Cam Profile Analyzer-1no</li> <li>Universal Governor Apparatus-1no</li> <li>Motoised Gyroscope-1no</li> <li>DBM-1no</li> <li>SDB-1</li> </ul>
	Engg Design Research Lab	<ul style="list-style-type: none"> <li>Client Systems-30no's</li> <li>Printer Dot Matrix-2no's</li> <li>Pro E Software</li> </ul>
	Fluid Mechanics & Machinery Lab	<ul style="list-style-type: none"> <li>Orifice Meter</li> <li>Venturi Meter</li> <li>Roto Meter</li> </ul>
	Manufacturing Technology Laboratory - II	<ul style="list-style-type: none"> <li>Radial Drilling Machine-1no</li> <li>Slotting Machine-1no</li> <li>Shaping Machine-1no</li> <li>Surface Grinding Machine-1no</li> </ul>



Department	Name of the Laboratory	Lab / Major Equipment's
Mechanical Engineering	Manufacturing Technology Laboratory-I	<ul style="list-style-type: none"> <li>• Centre Lathe-13no's</li> <li>• Moulding Table Set-5no's</li> <li>• Tool Dynamometer-1no</li> <li>• Microscope-1no</li> </ul>
	Metrology and Measurement Laboratory	<ul style="list-style-type: none"> <li>• Floating Carriage Micrometer-1no</li> <li>• Profile Projector-1no</li> <li>• Pneumatic Comparater-1no</li> <li>• Auto Collimator</li> </ul>
	Strength of Materials Laboratory	<ul style="list-style-type: none"> <li>• Universal Testing Machine-1no</li> <li>• Torsion Testing Machine-1no</li> <li>• Impact Testing Machine-1no</li> </ul>
	Thermal Laboratory I	<ul style="list-style-type: none"> <li>• Data Acquisition System With Any One of Above Engine-1no</li> <li>• S.C Four Stoke Aircooled Pertal Engine-1no</li> </ul>
	Thermal Laboratory II	<ul style="list-style-type: none"> <li>• Ic Engine</li> <li>• 2 Stroke</li> <li>• 4 Stroke</li> <li>• 4 Stroke Diesel Engine</li> </ul>
Physics	Physics Laboratory - I	<ul style="list-style-type: none"> <li>• Spectrometer</li> <li>• Travelling Microscope</li> <li>• Carey Foster's Bridge</li> <li>• Optical Fibre Attenuation Kit</li> <li>• Lee's Disc</li> </ul>
	Physics Laboratory - II	<ul style="list-style-type: none"> <li>• Spectrometer</li> <li>• Travelling Microscope</li> <li>• Ultrasonic Interferometer</li> <li>• Hysteris Loss meterc</li> </ul>

#### xv. Innovation Cell

Ministry of Education's Innovation Cell (MIC) launched the Institution's Innovation Council (IIC) program in collaboration with AICTE to systematically foster the culture of Innovation and start-up ecosystem in higher education institutions. The primary goal of this council is to inspire, encourage and nurture the young students for different activities involved in pre-incubation, incubation and making successful start-ups.

Our Institution (PID No: 1-5729671) will be registered for on URL: <https://iic.mic.gov.in> for promoting different activities related to the innovation, IPR, start-ups and entrepreneurships. Faculties and students are the members of IIC. The IIC cell conducts quarterly meetings in every quarter to plan the quarterly activities and review quarterly conducted activities. Due to these activities, students get chance to participate in various innovation related initiatives and competition organized by MHRD. Students actively interact with renowned businessman and academicians. They get opportunities to nurture their ideas. DGI's IIC helps students to experiment latest technologies to get some prototype for building their confidence. Overall students get extremely healthy environment right from ideation to start-ups.





**xvi. Social Media Cell**

Our Institution (PID No: 1-5729671) is proposed to strengthen the “Social Media Cell” and social media sites where the achievements and upcoming events shall be posted on a regular basis

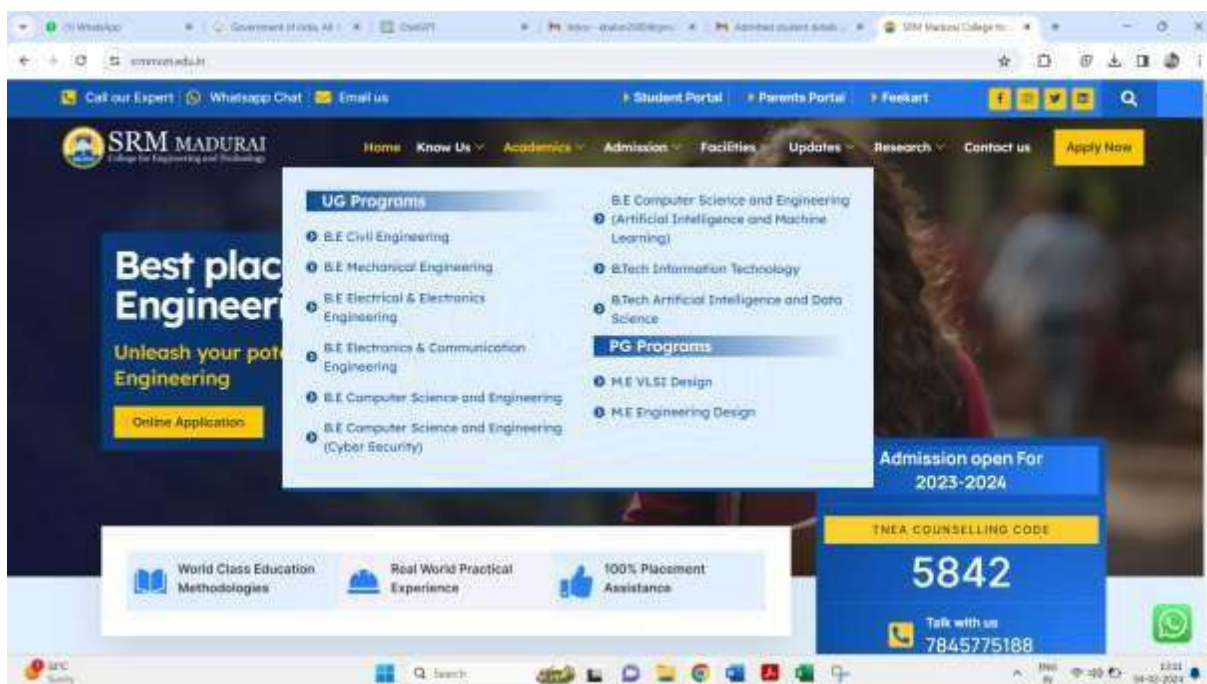
**xvii. Compliance of the National Academic Depository (NAD), applicable to PGCM/ PGDM**

**Institutions and University Departments**

Not Applicable

**xviii. courses in the website**

<https://srmcet.edu.in/>



**xix. Games and Sports Facilities**

Institution provides the facility for the students as the level of Indoor and Outdoor Games by conducting Zonally Tournament and Encourage to attend Tournament at District and State Level. Impervious of the specified facility is given underneath as photograph for your kind reference

*Outdoor and Indoor Games in the Institution:*







## **xx. Teaching Learning Process**

It aims to groom overall qualities of students. These are as follows:

### **Group & Self-Learning**

This is a very effective means towards preparing professionals who are proactive in seeking and acquiring knowledge rather than having it imparted only in the classroom. Free exchange of ideas among the group members through discussions and presentations not only leverages on time and effort but also enhances teaching and communication skills. Aptitude is developed for self-study and use of web resources and data banks to foster lifelong learning.

### **Problem Solving Exercises**

Problem solving is an integral part of the teaching-learning process. Lectures emphasize this aspect through carefully set, open-ended design problems. Students are organized in small groups where an opportunity is provided to do problem solving, engage in design exercises, and perform information search and processing.

### **Sustained Disciplined Work**

The ability to put in sustained and disciplined hard work over a sufficient length of time is one of the key factors to success in professional life. A typical semester is designed in an intensive and a modular fashion with an emphasis on regular and continuous work. The Evaluation System (see section 3) is designed to encourage this concept.

### **Self-Learning**

In its attempt to move away from teacher-centered learning to student-specific learning, the curriculum will actively encourage self learning. For this purpose 15% of the time allotted to theory and tutorial classes will be specifically earmarked for independent study.

### **Flexibility in Pace of Learning**

The evaluation system makes special provision for different paces of learning for different students. Yet, it attempts to inculcate respect for deadlines. Thus, while specifying a time limit within which tutorial/practical work must be completed, there is scope to submit such work beyond the deadline. However, there will be a small penalty for late submission. The faculty will notify of the penalty for late submission for each tutorial/practical session and also the time up to which late submissions will be accepted.

### **Quality Consciousness**

Students should be aware of the importance of continuous improvement, building zero-defect products and doing quality work. All courses will emphasize on quality as an integral part of teaching. Students will be taught how to test and certify their laboratory work and how to evaluate the worth of theoretical results.

### **Co-operative Working**

Given the complexity of technological problems of today, large teams work together to provide solutions. Thus, it is very important to learn group dynamics and to work in teams. Through co-operative work wherever possible, the Institute will encourage students to learn to select good teams, resolve leadership and group issues and in general, to make effective groups.



As per the National Education Policy (NEP), SRMMCET is at the forefront of aligning with the transformative vision for education in India. A cornerstone of this visionary approach is the directive that every educational institution, including SRMMCET, shall incorporate an inbuilt mechanism for Social and Emotional Learning (SEL). Recognizing SEL as an indispensable component of education, the NEP emphasizes its pivotal role in shaping individuals holistically. Social and Emotional Learning extends beyond academic knowledge, focusing on the cultivation of life skills such as empathy, effective communication, and resilience. The inbuilt mechanism for SEL within SRMMCET aligns seamlessly with the broader educational goal of nurturing not only intellectual but also emotional intelligence. This approach acknowledges the importance of equipping students from SRMMCET with the necessary tools to navigate the complexities of the modern world, emotional well-being and interpersonal skills.

Through the integration of SEL into its educational fabric, SRMMCET plays a key role in nurturing socially conscious and emotionally resilient citizens. This holistic educational approach, as envisioned by the NEP, empowers students at SRMMCET to thrive academically, socially, and emotionally, laying the foundation for a more compassionate and empathetic society. In essence, the inclusion of SEL into SRMMCET's educational framework reflects the institution's commitment to producing well-rounded individuals capable of making positive contributions to the world beyond the classroom.

**For each Post Graduate Courses give the following:**

- xxi. Title of the Course:**      **1. M.E; Engineering Design**  
   **2. M.E., VLSI**

**xxii. Laboratory facilities exclusive to the Post Graduate Course**

Programme Name	Level	Room Type	Room Id/Name	Area of Room in sqm	Building Name
ENGINEERING AND TECHNOLOGY	POST GRADUATE	Laboratory	11A	90	E Block
ENGINEERING AND TECHNOLOGY	POST GRADUATE	Laboratory	11B	90	E Block
ENGINEERING AND TECHNOLOGY	POST GRADUATE	Laboratory	12	90	E Block

**16. Enrolment and placement details of students in the last 3years**

Sl.No	Placed Students
2022-23	0
2023-24	0
2024-25	0



#### 17. List of Research Projects/Consultancy Works

Dept.	Title of the Event	Coordinator	Co-coordinator	Funding Agency	Sanctioned Amount
EEE	Emerging trends in optimal design of Electric Vehicles and Hydrogen Fuel cell Vehicles for Sustainable Futures	Dr. S. Durairaj	Dr. R.J.Venkatesh	ATAL - FDP	Rs.93,000/-
EEE	Renewable Energy Resources in India: Career Prospects and Challenges	Dr.J.Rajalakshmi	Dr.M.Karthik	TNSCST-Workshop	Rs.20,000/-

#### 18. MoUs with Industries

##### MOUs

##### 1. ATAL INCUBATION CENTRE, Anna University INCUBATION Foundation

AIC-AUIF is one of the premier incubation centres in the region identified by NITI Aayog, Government of India. It is actively engaged in developing the entrepreneurial ecosystem across diverse areas of Science & Technology through mentoring, funding access, and startup incubation support.

##### 2. Vodafone Intelligent Solutions

The objective of this MoU is to mutually complement both parties' efforts and outreach through collaboration, shared resources, and capacity building. The partnership is driven under the ***VOIS for Tech: Learning with Vodafone University Engagement Program***, focusing on upskilling students and creating industry-aligned learning opportunities.

##### 3. VI Micro-System Pvt. Ltd.

VI Micro-System is an established business organization supporting global product manufacturers in the development and sustenance of products across domains like Digital Home, Automotive Infotainment, Signal Processing, Embedded Applications, and Automated Testing, encompassing both hardware and software innovation.

##### 4. L&T EduTech

L&T EduTech aspires to be a global leader in employability-focused learning and assessment. It bridges the gap between academia and industry by offering technology-driven, outcome-based education that enhances students' career prospects and contributes to workforce development.

##### 5. IPCS Global Solutions, Madurai

IPCS Global Solutions is a leading provider of industrial automation and PLC/SCADA training solutions. The MoU aims to promote advanced skill development in areas like Industrial Automation, IoT, and Robotics through hands-on training, internships, and industry collaborations for engineering and polytechnic students.



**6. Garuda Aerospace, Chennai**

Garuda Aerospace is a pioneering drone technology company offering drone-based solutions for agriculture, mapping, surveillance, and industrial inspections. Through this MoU, students gain exposure to drone technology, training in UAV operations, and opportunities for research and innovation in drone applications.

**7. Land Coordinates Technology, Chennai**

Land Coordinates Technology specializes in geospatial engineering services including GIS, land surveying, and mapping solutions. The MoU facilitates knowledge sharing, internship opportunities, and practical training in geospatial technologies to enhance student learning and project capabilities.